

RNAV (GPS) RWY 20

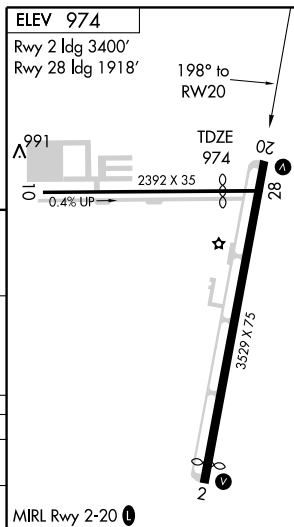
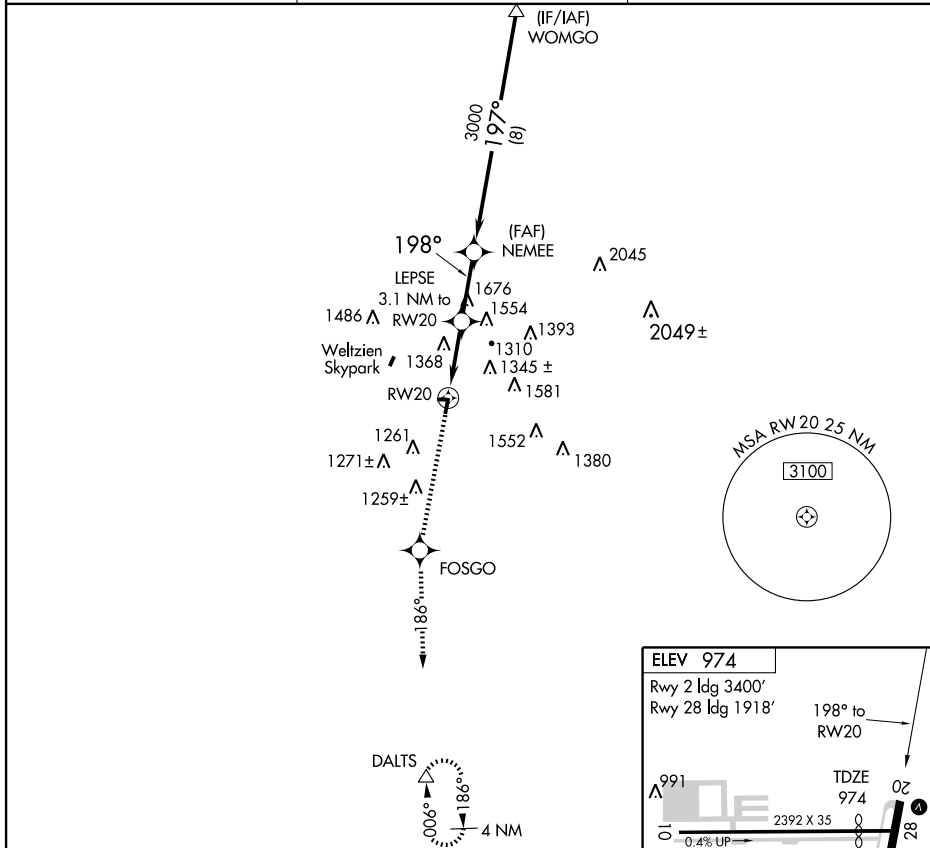
WADSWORTH MUNI (3G3)

APP CRS 198°	Rwy ldg TDZE Apt Elev	3529 974 974
------------------------	-----------------------------	---

▼ Use Wayne County altimeter setting; when not received, use Akron-Canton altimeter setting and increase all MDAs 20 feet. DME/DME RNP-0.3 NA. Visibility reduction by helicopters **▲** NA. Circling NA west of Rwy 2-20. When VGSI INOP, procedure NA at night.

MISSED APPROACH: Climb to 3000 direct FOSGO and via 186° track to DALTS and hold.

WAYNE COUNTY ASOS 118.075	AKRON-CANTON APP CON * 118.6 371.875	UNICOM 122.8 (CTAF) 0
-------------------------------------	--	---------------------------------



	WOMGO	NEMEE	LEPSE 3.1 NM to RW20	FOSGO	DALTS
Procedure Turn NA	3000	3000	2060	TRK 186°	△
	VGSI and descent angles not coincident.		3.18° TCH 40		
	8 NM	3 NM	3.1 NM		
CATEGORY	A	B	C	D	
LNAV MDA	1820-1 846 (900-1)	1820-1¼ 846 (900-1¼)	1820-2½ 846 (900-2½)	NA	
CIRCLING	1820-1 846 (900-1)	1820-1¼ 846 (900-1¼)	1820-2½ 846 (900-2½)	NA	

EC-2, 22 OCT 2009 to 19 NOV 2009

EC-2, 22 OCT 2009 to 19 NOV 2009