

# RNAV (GPS) RWY 2

WADSWORTH MUNI (3G3)

APP CRS	Rwy ldg	<b>3400</b>
<b>018°</b>	TDZE	<b>972</b>
	Apt Elev	<b>974</b>

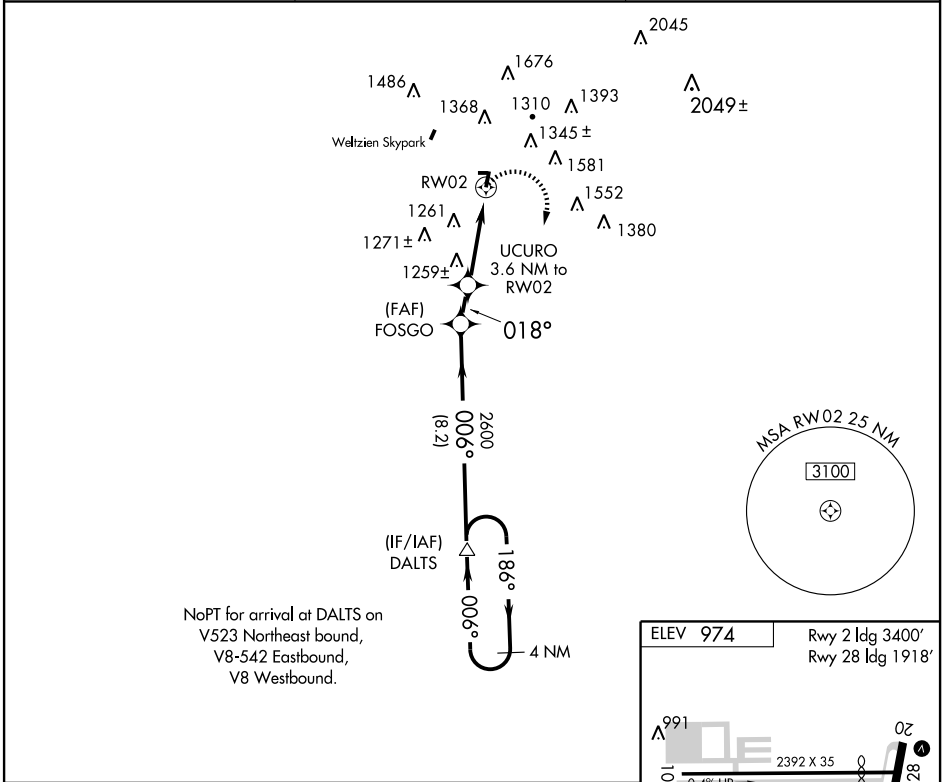
Use Wayne County altimeter setting; when not received, use Akron-Canton altimeter setting and increase all MDAs 20 feet.  
 DME/DME RNP-0.3 NA. Circling NA west of Rwy 2-20. When VGS1 INOP, procedure NA at night. Visibility reduction by helicopters NA.

MISSED APPROACH: Climbing right turn to 3000 direct DALTS and hold.

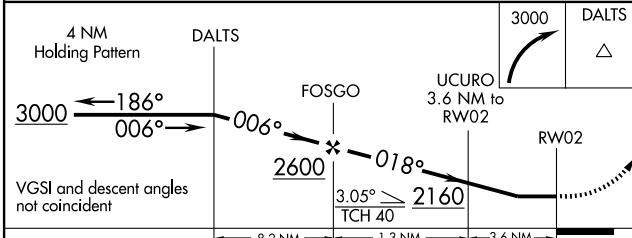
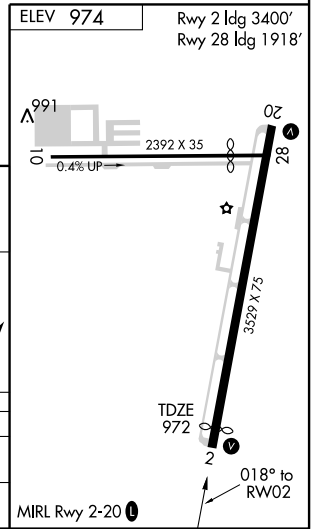
WAYNE COUNTY ASOS  
**118.075**

AKRON-CANTON APP CON \*  
**118.6 371.875**

UNICOM  
**122.8 (CTAF) 0**



NoPT for arrival at DALTS on V523 Northeast bound, V8-542 Eastbound, V8 Westbound.



CATEGORY	A	B	C	D
LNAV MDA	1580-1	608 (700-1)	1580-1¾ 608 (700-1¾)	NA
CIRCLING	1660-1 686 (700-1)	1680-1 706 (800-1)	1680-2 706 (800-2)	NA

EC-2, 22 OCT 2009 to 19 NOV 2009

EC-2, 22 OCT 2009 to 19 NOV 2009