

VORTAC VUZ <b>114.4</b> Chan <b>91</b>	APP CRS <b>302°</b>	Rwy ldg TDZE Apt Elev	<b>N/A</b> <b>N/A</b> <b>482</b>
--	------------------------	-----------------------------	--

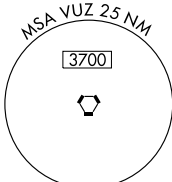
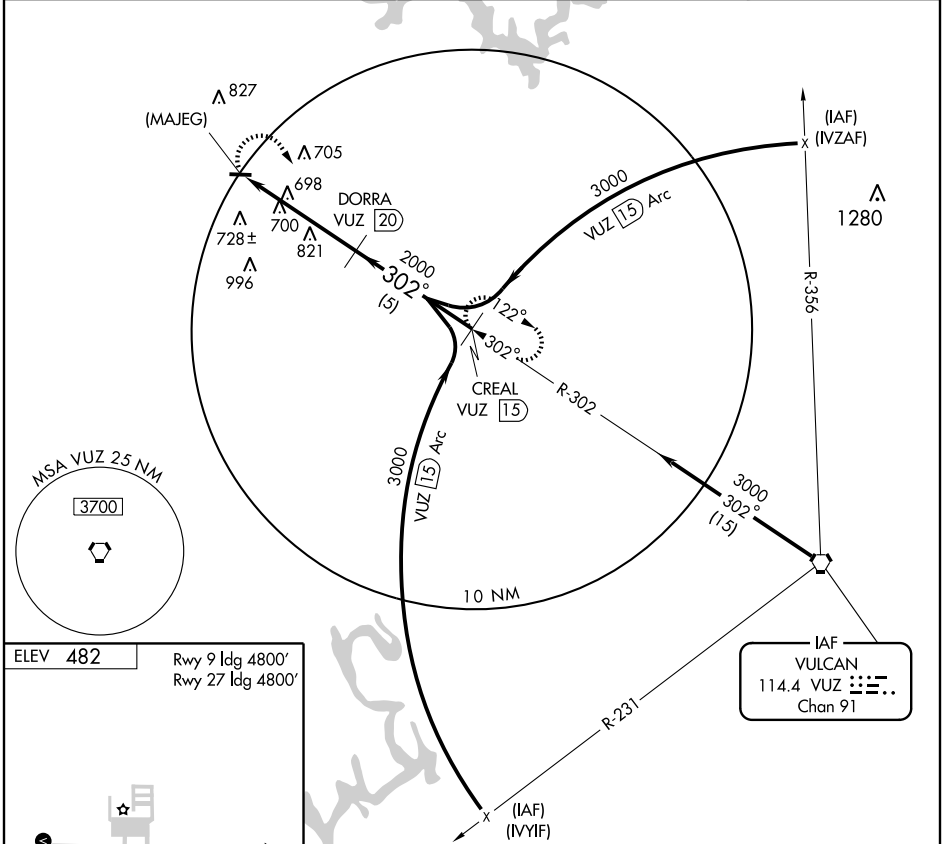
# VOR/DME or GPS-A

JASPER/WALKER COUNTY-BEVILL FIELD (JF<sup>TX</sup>)

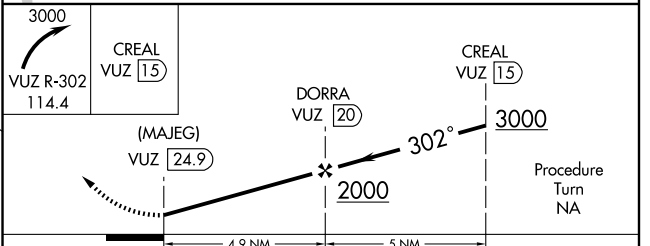
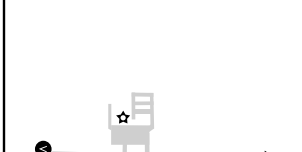
**NA** When local altimeter setting not received, use Birmingham altimeter setting and increase all MDAs 160 feet. ACTIVATE MIRL Rwy 9-27 and VASI Rwys 9 and 27-CTAF.

MISSED APPROACH: Climbing right turn to 3000 via VUZ R-302 to CREAL 15 DME and hold.

AWOS-3 <b>119.225</b>	BIRMINGHAM APP CON <b>127.675 338.2</b>	UNICOM <b>122.7 (CTAF)</b>
--------------------------	--	-------------------------------



ELEV 482' Rwy 9 ldg 4800' Rwy 27 ldg 4800'



CATEGORY	A	B	C	D
CIRCLING	1160-1 680 (700-1)	1160-1¼ 680 (700-1¼)	1160-2 680 (700-2)	1160-2¼ 680 (700-2¼)

SE-4, 22 OCT 2009 to 19 NOV 2009

SE-4, 22 OCT 2009 to 19 NOV 2009