

VOR/DME ZV <b>111.4</b> Chan <b>51</b>	APP CRS <b>229°</b>	Rwy Idg TDZE <b>1047</b> Apt Elev <b>1051</b>	<b>3498</b>
--	------------------------	---	-------------

# VOR/DME RWY 26

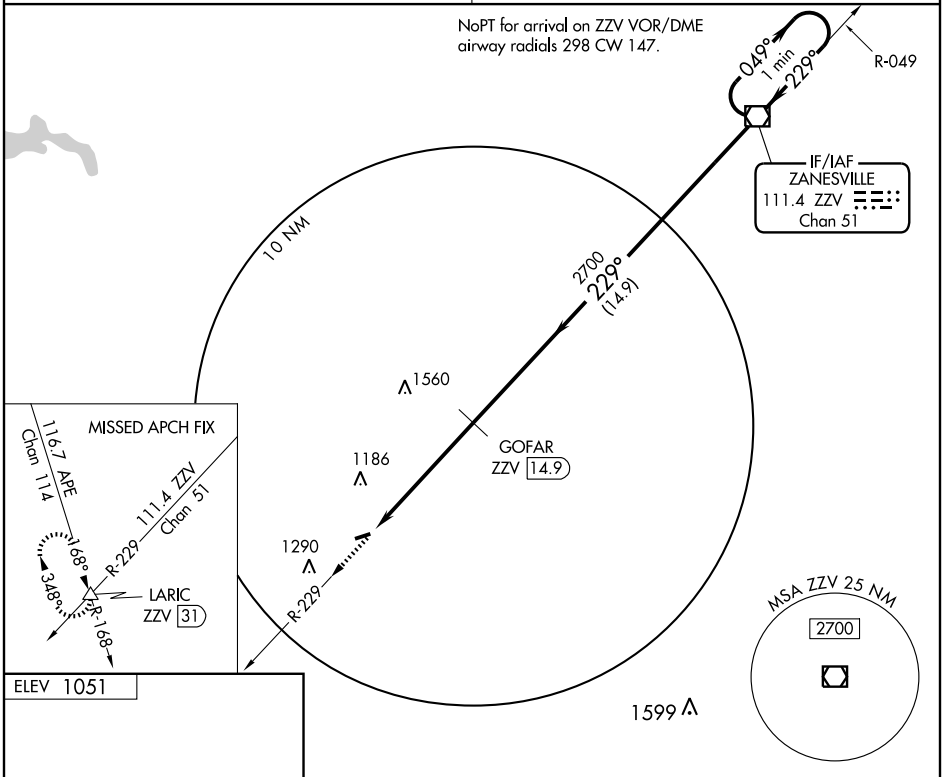
NEW LEXINGTON/ PERRY COUNTY (I86)

**NA** Visibility reduction by helicopters NA. Use Zanesville altimeter setting; when not received, use Lancaster altimeter setting and increase all MDA 20 feet.

MISSED APPROACH: Climb to 3000 via ZV VOR/DME R-229 to LARIC INT/ZV 31 DME and hold.

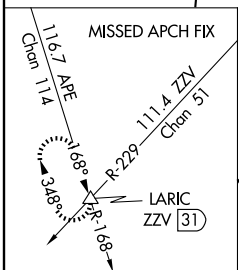
INDIANAPOLIS CENTER  
**124.45 370.9**

UNICOM  
**122.8 (CTAF)**

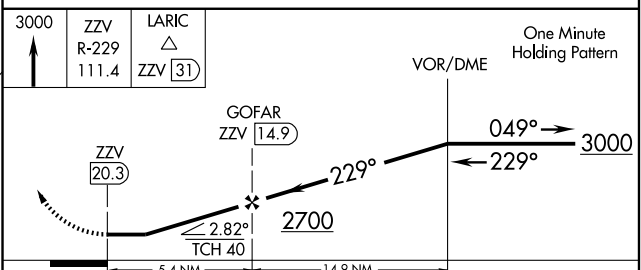
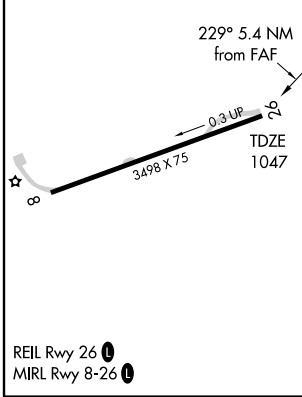


EC-2, 22 OCT 2009 to 19 NOV 2009

EC-2, 22 OCT 2009 to 19 NOV 2009



ELEV 1051



CATEGORY	A	B	C	D
S-26	1620-1 573 (600-1)	1620-1¼ 573 (600-1½)	1620-1½ 573 (600-1½)	NA
CIRCLING	1620-1 569 (600-1)	1620-1¼ 569 (600-1½)	1620-1½ 569 (600-1½)	NA