

RNAV (GPS) RWY 26

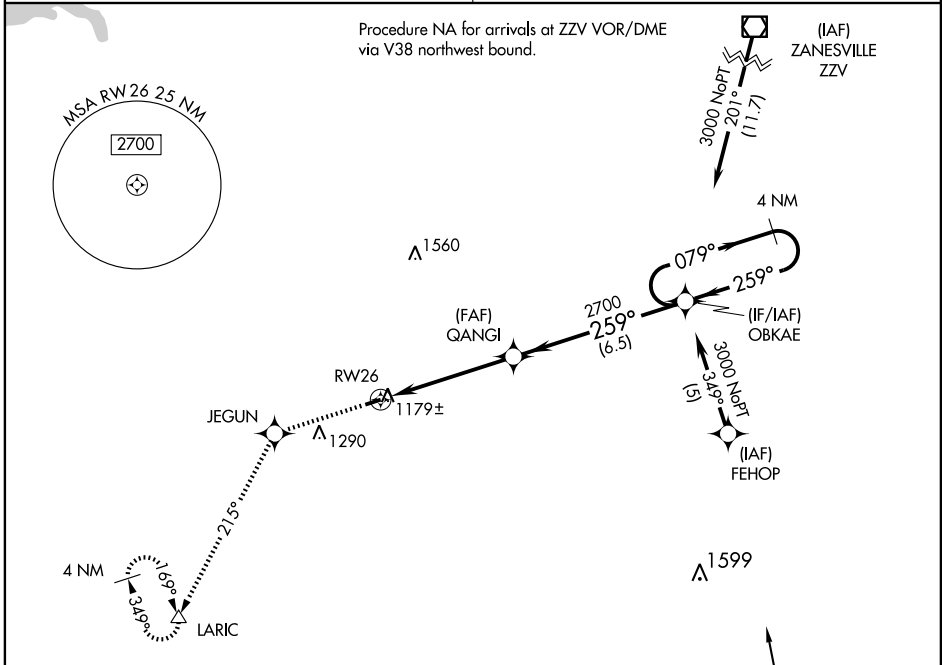
NEW LEXINGTON/ PERRY COUNTY (I86)

APP CRS 259°	Rwy Idg TDZE Apt Elev	3498 1047 1051
------------------------	-----------------------------	---

▽ DME/DME RNP-0.3 NA. Visibility reduction by helicopters NA.
△ NA Use Zanesville altimeter setting; when not received, use Lancaster altimeter setting and increase all MDA 20 feet.

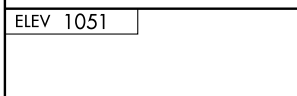
MISSED APPROACH: Climb to 3000 direct JEGUN and via 215° track to LARIC and hold.

INDIANAPOLIS CENTER 124.45 370.9	UNICOM 122.8 (CTAF)
--	-------------------------------



EC-2, 22 OCT 2009 to 19 NOV 2009

EC-2, 22 OCT 2009 to 19 NOV 2009



ELEV 1051	3000	JEGUN	LARIC	4 NM Holding Pattern
	↑	✧	215° track	△
		QANGI	OBKAE	
			079° →	← 259° 3000
		RW26		
			2700	
			3.04° TCH 40	
			5 NM	6.5 NM
CATEGORY	A	B	C	D
LNAV MDA	1 500 - 1	453 (500-1)	1 500 - 1¼ 453 (500-1¼)	NA
CIRCLING	1 600 - 1	549 (600-1)	1 600 - 1½ 549 (600-1½)	NA

