

# RNAV (GPS) RWY 17

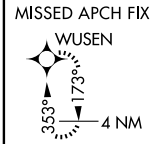
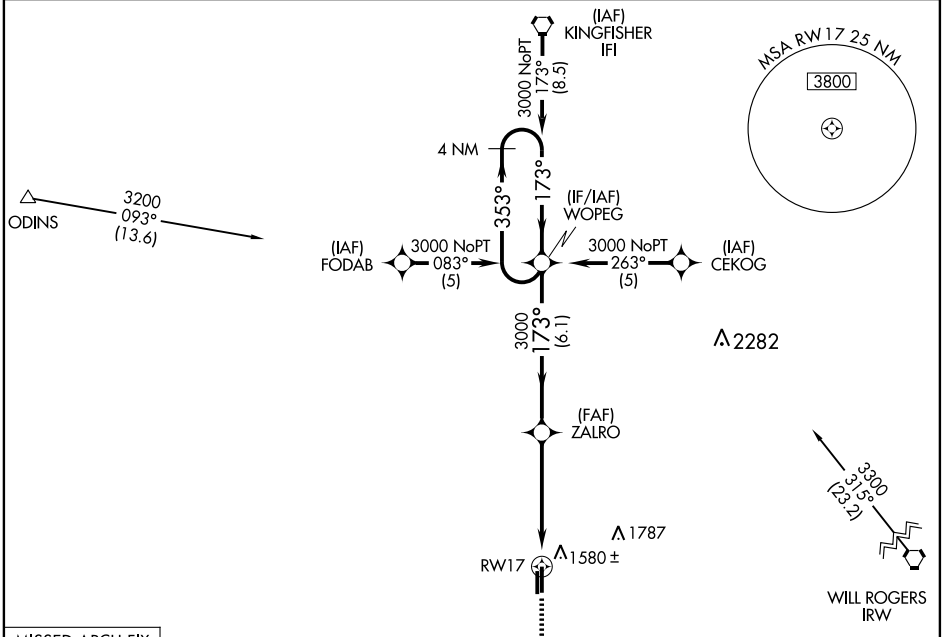
EL RENO RGNL (R,QO)

APP CRS	Rwy Idg	<b>5600</b>
<b>173°</b>	TDZE	<b>1415</b>
	Apt Elev	<b>1418</b>

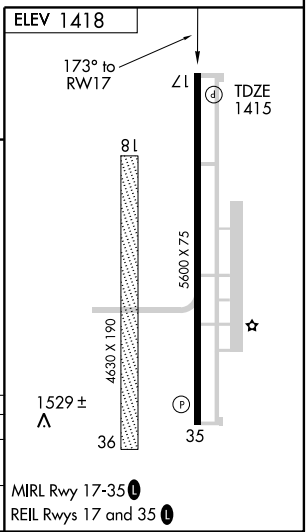
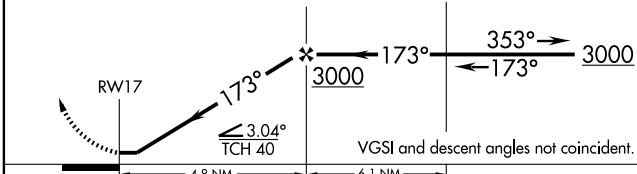
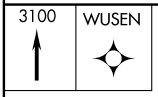
**⚠** DME/DME RNP-0.3 NA. Visibility reduction by helicopters NA. When local altimeter setting not received, use Wiley Post altimeter setting and increase all MDAs 60 feet and LNAV visibility Cat C ¼ mile.

**⚠** MISSED APPROACH: Climb to 3100 direct WUSEN and hold.

AWOS-3 <b>118.475</b>	OKE CITY APP CON <b>124.6 266.8</b>	UNICOM <b>122.8</b> (CTAF) <b>0</b>
--------------------------	--	--



Procedure NA for arrival on IRW  
VORTAC airway radials 263 CW 023.



CATEGORY	A	B	C	D
LNAV MDA	1880-1 465 (500-1)		1880-1½ 465 (500-1½)	NA
CIRCLING	1940-1 522 (600-1)		1940-1½ 522 (600-1½)	NA

SC-1, 22 OCT 2009 to 19 NOV 2009

SC-1, 22 OCT 2009 to 19 NOV 2009