

MINEOLA/QUITMAN, TEXAS

AL-6800 (FAA)

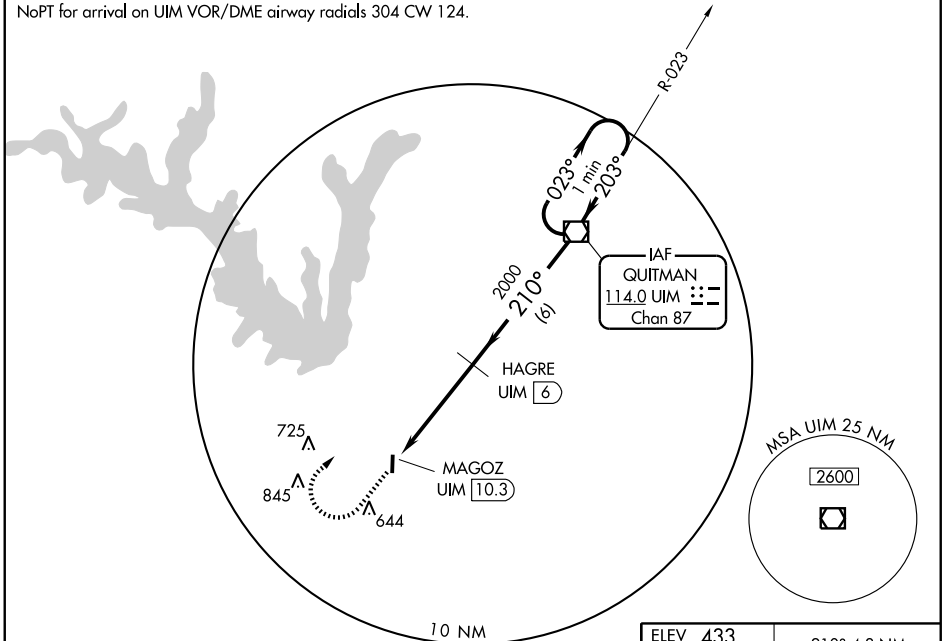
VOR/DME UIM <b>114.0</b> Chan <b>87</b>	APP CRS <b>210°</b>	Rwy Idg TDZE Apt Elev <b>433</b>	<b>N/A</b> <b>N/A</b> <b>433</b>
---	------------------------	---	--

**VOR/DME-B**  
MINEOLA/ WOOD COUNTY (JDD)

**▽** MISSED APPROACH: Climb to 1500 then climbing right turn to 2100 direct UIM VOR/DME and hold.

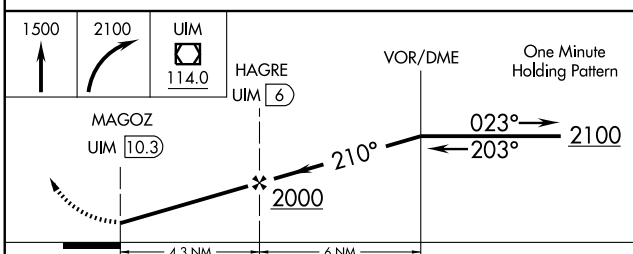
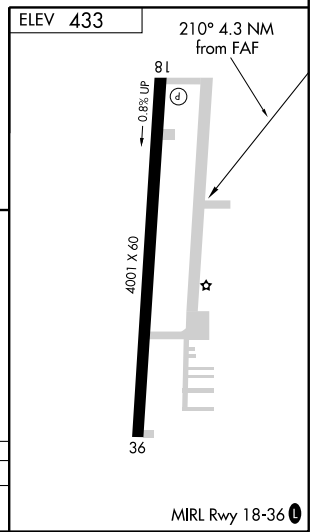
AWOS-3 <b>118.9</b>	LONGVIEW APP CON ★ <b>128.75 379.15</b>	UNICOM <b>122.8 (CTAF) 0</b>
------------------------	--	---------------------------------

NoPT for arrival on UIM VOR/DME airway radials 304 CW 124.



SC-2, 22 OCT 2009 to 19 NOV 2009

SC-2, 22 OCT 2009 to 19 NOV 2009



CATEGORY	A	B	C	D
CIRCLING	980-1	547 (600-1)	1000-1½ 567 (600-1½)	NA

MINEOLA/QUITMAN, TEXAS  
Amdt 2 09239

32°45'N-95°30'W

MINEOLA/ WOOD COUNTY (JDD)  
**VOR/DME-B**

MIRL Rwy 18-36 0