

# RNAV (GPS) RWY 9

CARLISLE MUNI (4M3)

APP CRS <b>088°</b>	Rwy Idg TDZE Apt Elev	<b>4501</b> <b>240</b> <b>240</b>
------------------------	-----------------------------	---

**▽** Use Stuttgart altimeter setting when not received, use Little Rock Adams Field altimeter setting and increase all MDAs 20 feet.  
**△ NA** Visibility reduction by helicopters NA. DME/DME RNP-0.3 NA.

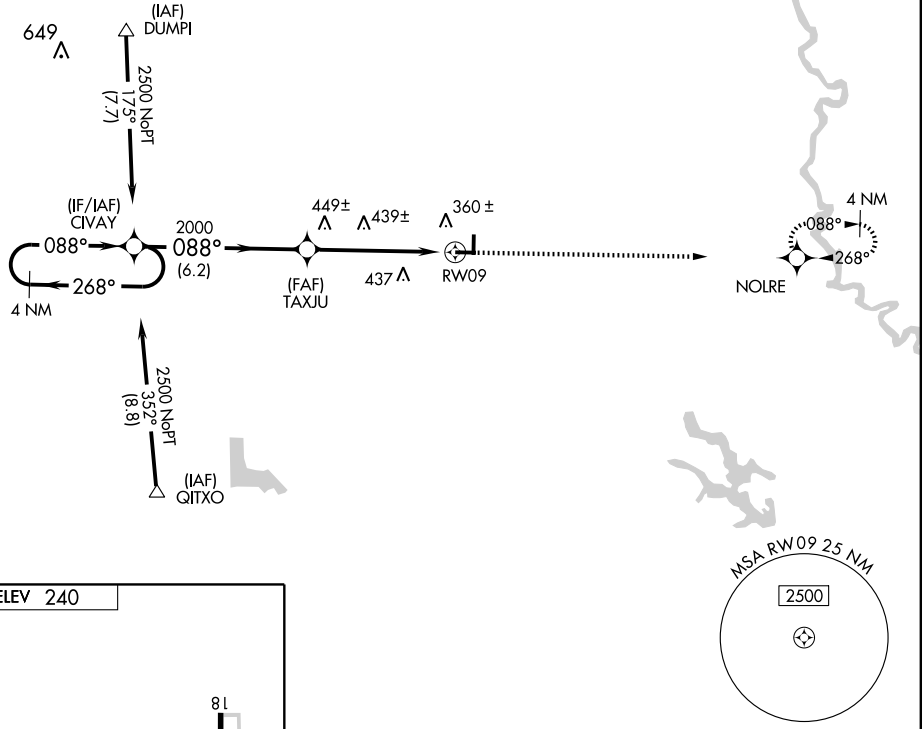
**MISSED APPROACH:** Climb to 2500 direct NOLRE and hold.

LITTLE ROCK APP CON  
**135.4 353.6**

CLNC DEL  
**135.4**

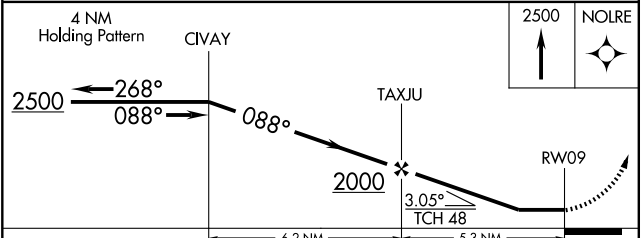
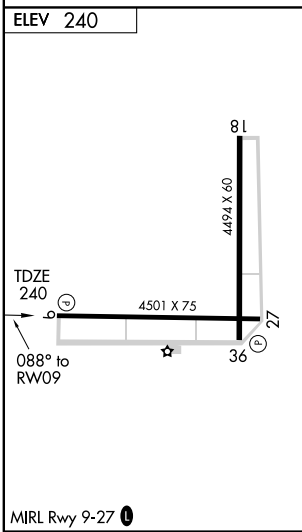
UNICOM  
**122.8 (CTAF) 0**

Procedure NA for arrivals at DUMPI via V305 northeast bound.



SC-1, 22 OCT 2009 to 19 NOV 2009

SC-1, 22 OCT 2009 to 19 NOV 2009



CATEGORY	A	B	C	D
LNAV MDA	780-1	540 (600-1)	NA	
CIRCLING	840-1	600 (600-1)	NA	