

RNAV (GPS) RWY 27

CARLISLE MUNI (4M3)

APP CRS 268°	Rwy Idg TDZE Apt Elev	4501 240 240
------------------------	-----------------------------	---

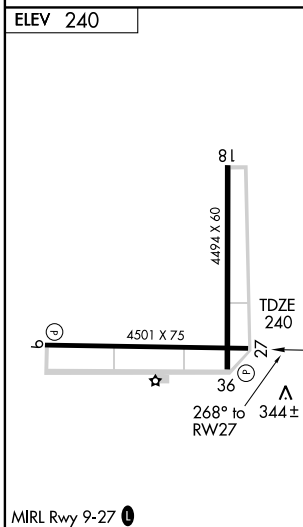
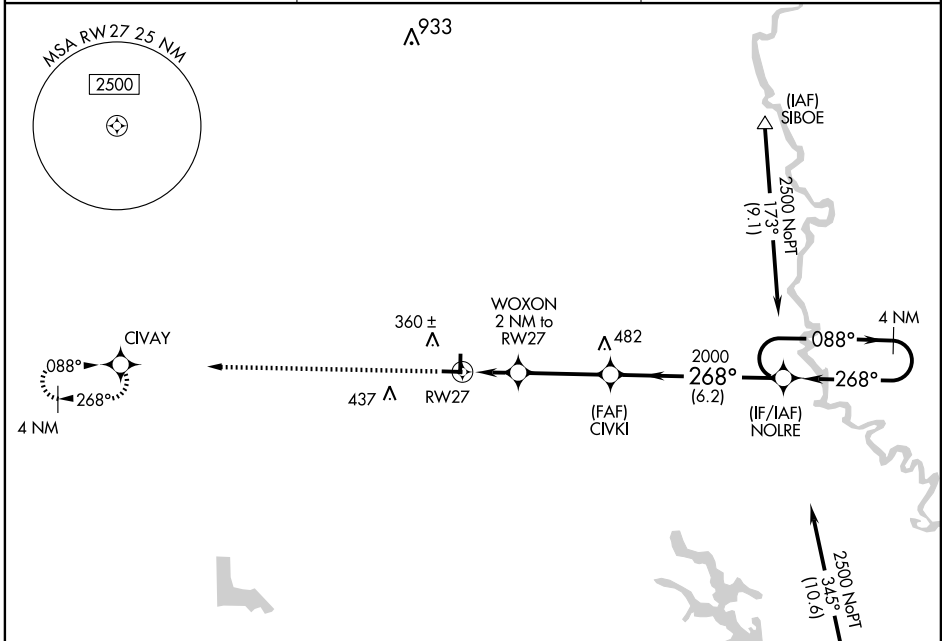
▽ Use Stuttgart altimeter setting when not received, use Little Rock Adams Field altimeter setting and increase all MDAs 20 feet.
△ NA DME/DME RNP-0.3 NA.

MISSED APPROACH: Climb to 2500 direct CIVAY and hold.

LITTLE ROCK APP CON
135.4 353.6

CLNC DEL
135.4

UNICOM
122.8 (CTAF) 0



Procedure NA for arrivals at DRAST via V47 southwest bound.

CATEGORY	A	B	C	D
LNAV MDA	640-1	400 (400-1)		NA
CIRCLING	800-1	560 (600-1)		NA

SC-1, 22 OCT 2009 to 19 NOV 2009

SC-1, 22 OCT 2009 to 19 NOV 2009