

RNAV (GPS) RWY 4

FACTORYVILLE/ SEAMANS FIELD (9N3)

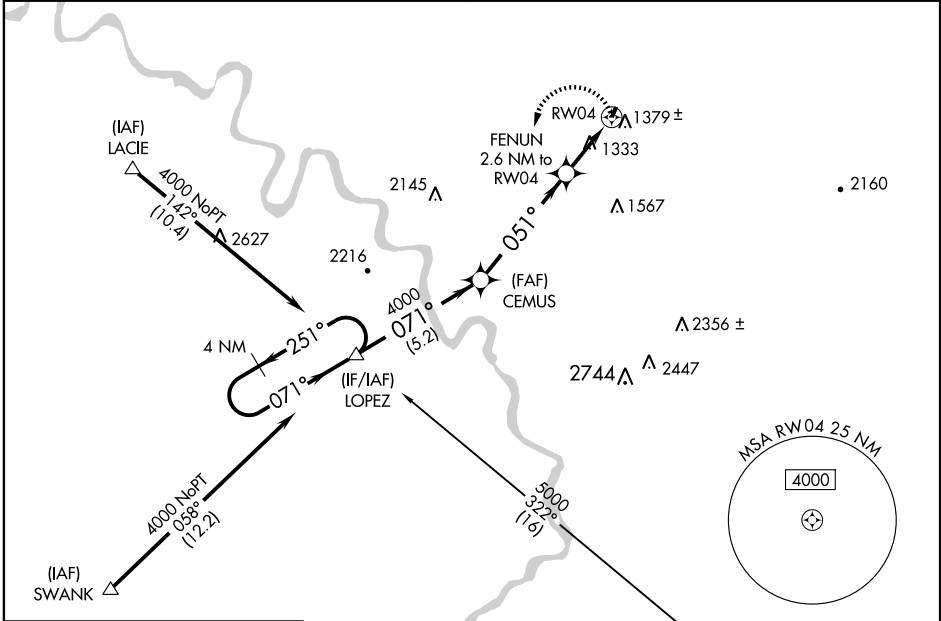
APP CRS 051°	Rwy Idg 2500
	TDZE 1209
	Apt Elev 1209

▽ DME/DME RNP-0.3 NA.
Obtain local altimeter setting on CTAF; when not received, use Wilkes-Barre/Scranton Intl altimeter setting.
△ NA VDP NA when using Wilkes-Barre/Scranton Intl altimeter setting.

MISSED APPROACH: Climbing left turn to 4000 direct LOPEZ and hold.

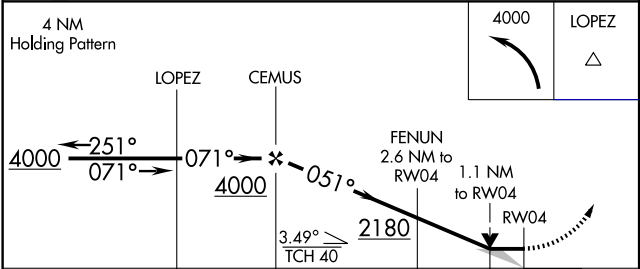
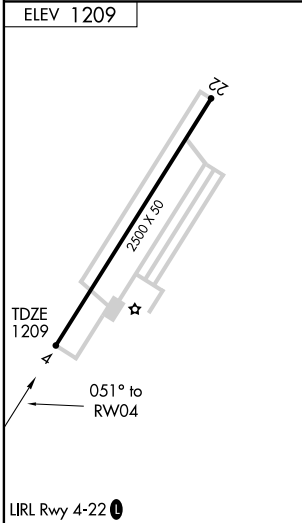
WILKES-BARRE APP CON
124.5 256.7

UNICOM
122.7 (CTAF) 0



NE-4, 22 OCT 2009 to 19 NOV 2009

NE-4, 22 OCT 2009 to 19 NOV 2009



CATEGORY	A	B	C	D
LNVA MDA	1640-1	431 (500-1)		NA
CIRCLING	1720-1	511 (600-1)		NA
WILKES-BARRE/SCRANTON INTL ALTIMETER SETTING MINIMUMS				
LNVA MDA	1720-1	511 (600-1)		NA
CIRCLING	1800-1	591 (600-1)		NA