

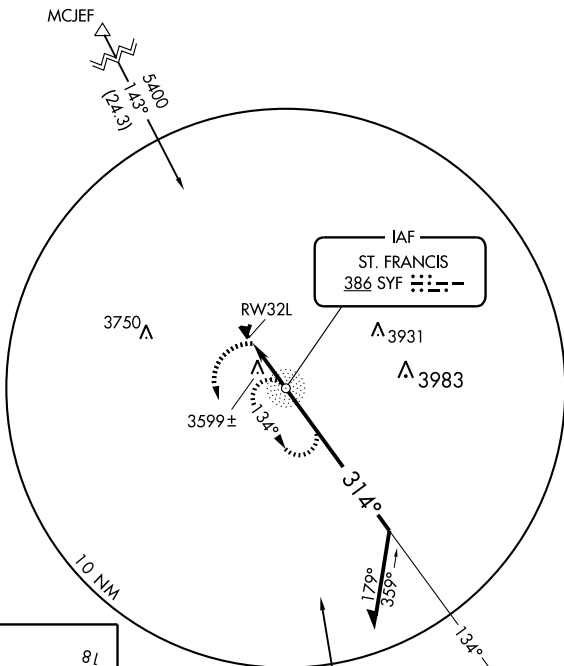
NDB or GPS RWY 32L

ST. FRANCIS/CHEYENNE COUNTY MUNI (SYF)

NDB SYF 386	APP CRS 314°	Rwy Idg TDZE Apt Elev	3138 3411 3411
-----------------------	------------------------	-----------------------------	---

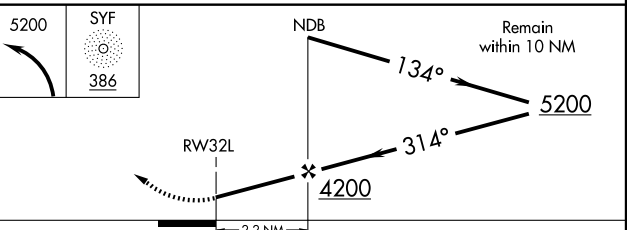
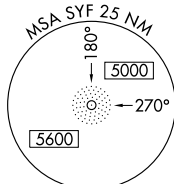
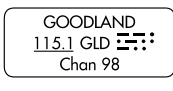
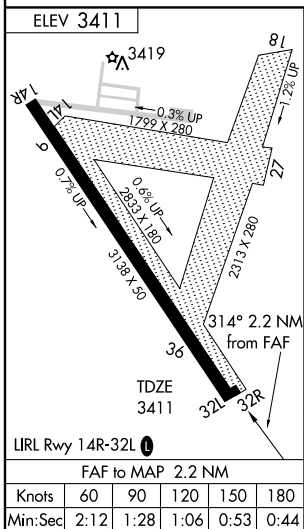
▲ NA Use Goodland, KS altimeter setting. MISSED APPROACH: Climbing left turn to 5200 direct SYF NDB and hold.

AWOS-3 118.925	DENVER CENTER 132.5 379.15	UNICOM 122.8 (CTAF) 0
--------------------------	--------------------------------------	---------------------------------



NC-2, 22 OCT 2009 to 19 NOV 2009

NC-2, 22 OCT 2009 to 19 NOV 2009



CATEGORY	A	B	C	D
S-32L	4000-1 589 (600-1)		4000-1½ 589 (600-1½)	NA
CIRCLING	4000-1 589 (600-1)		4000-1½ 589 (600-1½)	NA