

SOUTH HILL, VIRGINIA

AL-6793 (FAA)

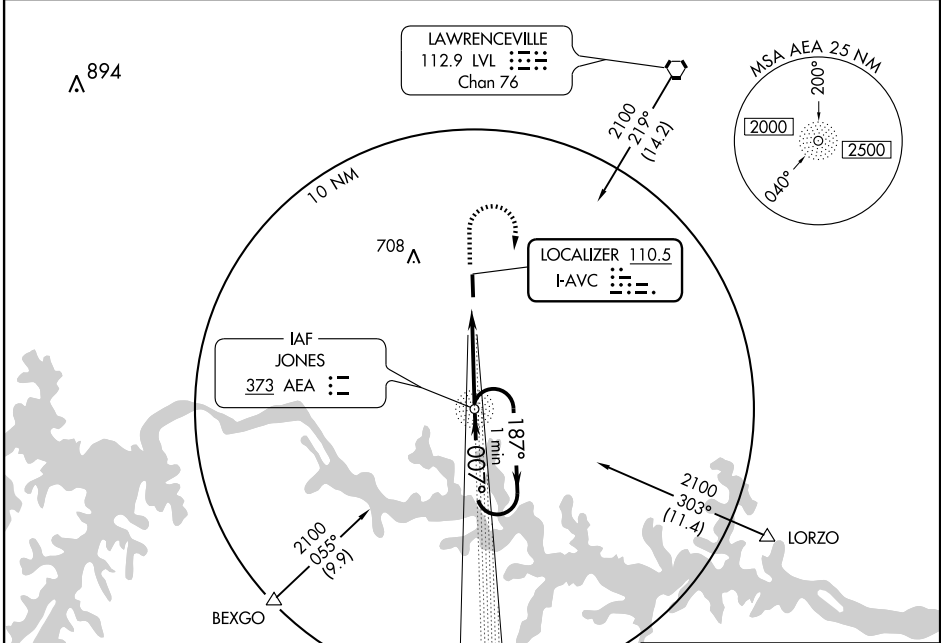
LOC RWY 1

SOUTH HILL / MECKLENBURG-BRUNSWICK RGNL (A VC)

LOC I-AVC 110.5	APP CRS 007°	Rwy Idg 5002
		TDZE 417
		Apt Elev 442

▽ MISSED APPROACH: Climb to 1100 then climbing right turn to 2000 direct AEA NDB and hold.

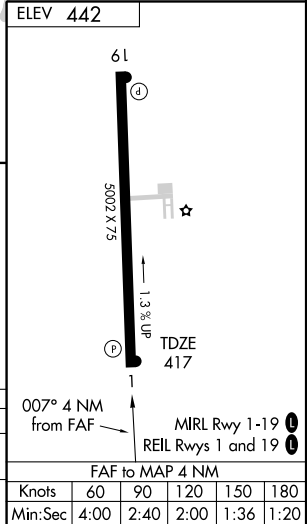
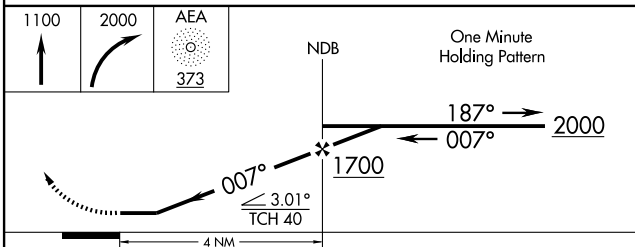
AWOS-3 127.525	WASHINGTON CENTER 118.75 377.1	UNICOM 122.8 (CTAF) 0
--------------------------	--	---------------------------------



NE-3, 22 OCT 2009 to 19 NOV 2009

NE-3, 22 OCT 2009 to 19 NOV 2009

ADF REQUIRED



CATEGORY	A	B	C	D
S-1	800-1 383 (400-1)			800-1¼ 383 (400-1¼)
CIRCLING	800-1 358 (400-1)	900-1 458 (500-1)	900-1½ 458 (500-1½)	1060-2 618 (700-2)

	Knots	60	90	120	150	180
Min:Sec	4:00	2:40	2:00	1:36	1:20	

SOUTH HILL, VIRGINIA
Orig 07242

SOUTH HILL / MECKLENBURG-BRUNSWICK RGNL (A VC)
36°41'N - 78°03'W

LOC RWY 1