

SOUTH HILL, VIRGINIA

AL-6793 (FAA)

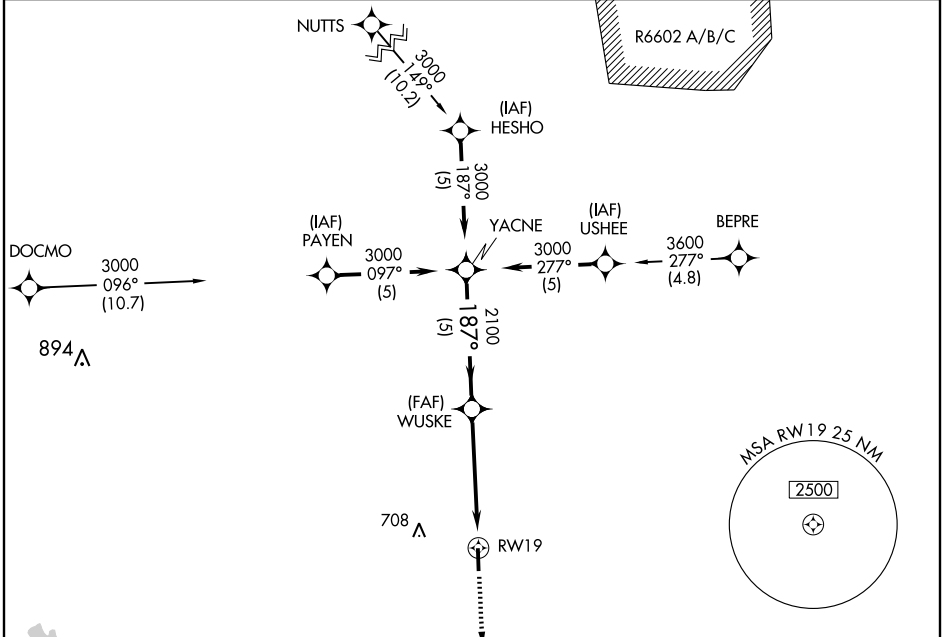
GPS RWY 19

SOUTH HILL / MECKLENBURG-BRUNSWICK RGNL (A/C)

APP CRS	Rwy Idg	5002
187°	TDZE	442
	Apt Elev	442

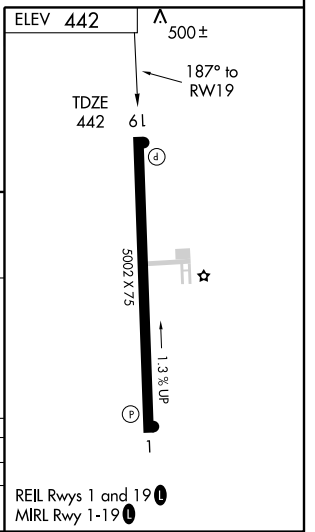
<p>▼</p> <p>▲ NA</p>	MISSED APPROACH: Climb to 2000 direct POMAJ WP and hold.
----------------------	--

AWOS-3 127.525	WASHINGTON CENTER 118.75 377.1	UNICOM 122.8 (CTAF) 0
--------------------------	--	---------------------------------



NE-3, 22 OCT 2009 to 19 NOV 2009

NE-3, 22 OCT 2009 to 19 NOV 2009



	YACNE	WUSKE	POMAJ
	3000	2100	2000
	187°	3.05%	187°
	5 NM	5 NM	

CATEGORY	A	B	C	D
S-19		760-1	318 (400-1)	
CIRCLING	800-1 358 (400-1)	900-1 458 (500-1)	900-1½ 458 (500-1½)	1060-2 618 (700-2)

SOUTH HILL, VIRGINIA
Orig 07242

SOUTH HILL / MECKLENBURG-BRUNSWICK RGNL (A/C)
36°41'N - 78°03'W

GPS RWY 19