

# RNAV (GPS) RWY 20

HUGOTON MUNI (HQQ)

WAAS CH <b>86603</b> W20A	APP CRS <b>196°</b>	Rwy Idg <b>5000</b> TDZE <b>3132</b> Apt Elev <b>3134</b>
---------------------------------	------------------------	---

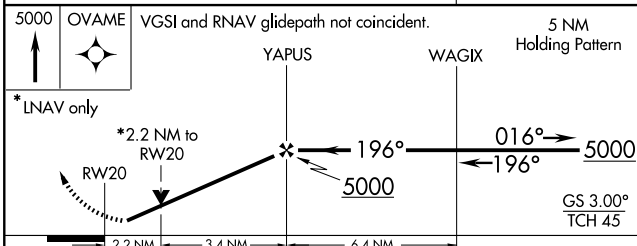
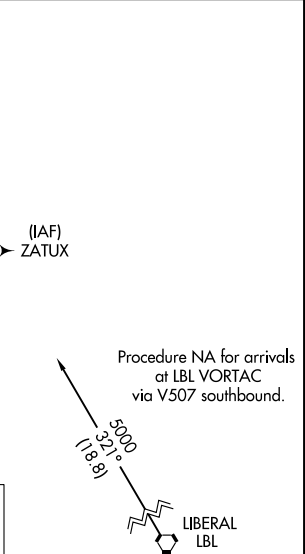
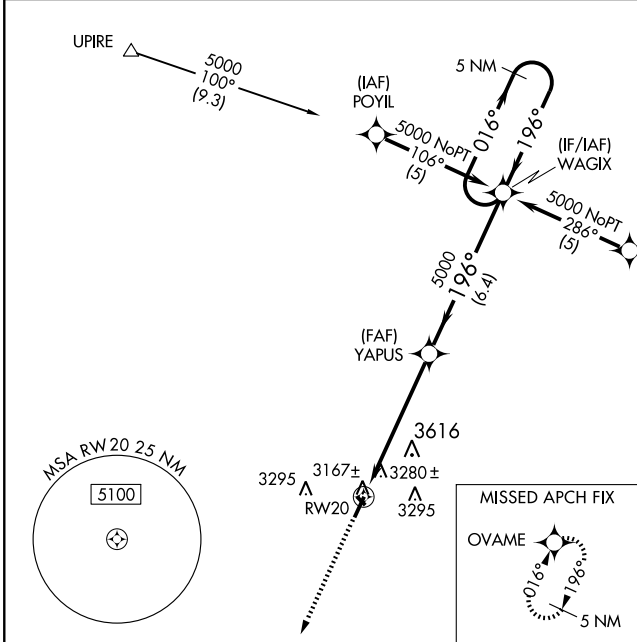
**NA** BARO-VNAV NA when using Liberal altimeter setting. For uncompensated BARO-VNAV systems, LNAV/VNAV NA below -21°C (-5°F) or above 54°C (130°F). DME/DME RNP-0.3 NA. Visibility reduction by helicopters NA. If local altimeter setting not received, use Liberal altimeter setting and increase all DAs 84 feet and MDAs 100 feet. VDP NA when using Liberal altimeter setting.

MISSED APPROACH: Climb to 5000 direct OVAME and hold.

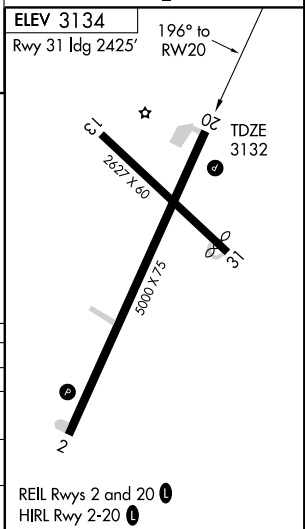
AWOS-3  
**118.6**

KANSAS CITY CENTER  
**134.0 290.8**

UNICOM  
**122.8 (CTAF) 0**



CATEGORY	A	B	C	D
LPV DA	3382-1 250 (300-1)			NA
LNAV/VNAV DA	3437-1 305 (400-1)			NA
LNAV MDA	3860-1 728 (800-1)	3860-2 728 (800-2)		NA
CIRCLING	3860-1 726 (800-1)	3860-2 726 (800-2)		NA



NC-2, 22 OCT 2009 to 19 NOV 2009

NC-2, 22 OCT 2009 to 19 NOV 2009

REIL Rwy 2 and 20 0  
HIRL Rwy 2-20 0