

RNAV (GPS) RWY 2

HUGOTON MUNI (HQQ)

WAAS CH 63003 W02A	APP CRS 016°	Rwy Idg 5000 TDZE 3133 Apt Elev 3134
--	------------------------	---

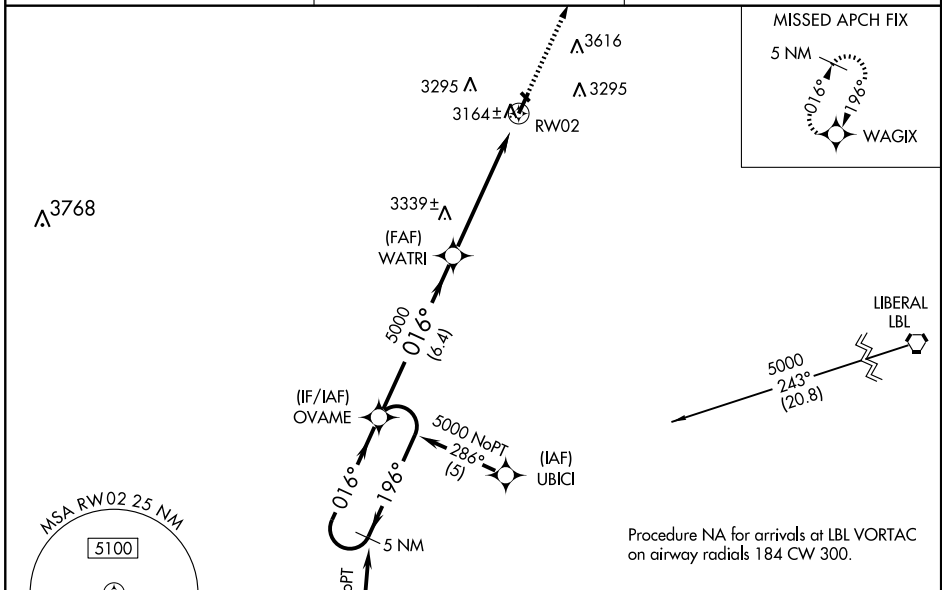
NA BARO-VNAV NA when using Liberal altimeter setting.
For uncompensated BARO-VNAV systems, LNAV/VNAV NA below -21°C (-5°F) or above 54°C (130°F).
DME/DME RNP-0.3 NA. Visibility reduction by helicopters NA.
If local altimeter setting not received, use Liberal altimeter setting and increase all DAs 84 feet and all MDAs 100 feet.

MISSED APPROACH: Climb to 5000 direct WAGIX and hold.

AWOS-3
118.6

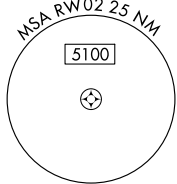
KANSAS CITY CENTER
134.0 290.8

UNICOM
122.8 (CTAF)

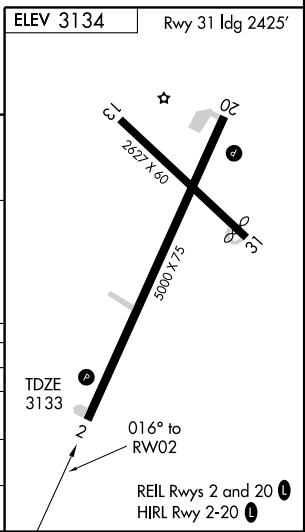
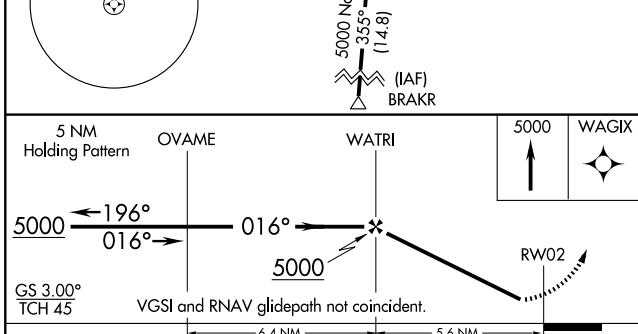


NC-2, 22 OCT 2009 to 19 NOV 2009

NC-2, 22 OCT 2009 to 19 NOV 2009



Procedure NA for arrivals at LBL VORTAC on airway radials 184 CW 300.



CATEGORY	A	B	C	D
LPV DA	3383-1	250 (300-1)		NA
LNAV/VNAV DA	3424-1	291 (300-1)		NA
LNAV MDA	3600-1	467 (500-1)	3600-1¼ 467 (500-1¼)	NA
CIRCLING	3600-1	466 (500-1)	3600-1½ 466 (500-1½)	NA