

HUGOTON, KANSAS

AL-6791 (FAA)

# NDB RWY 2

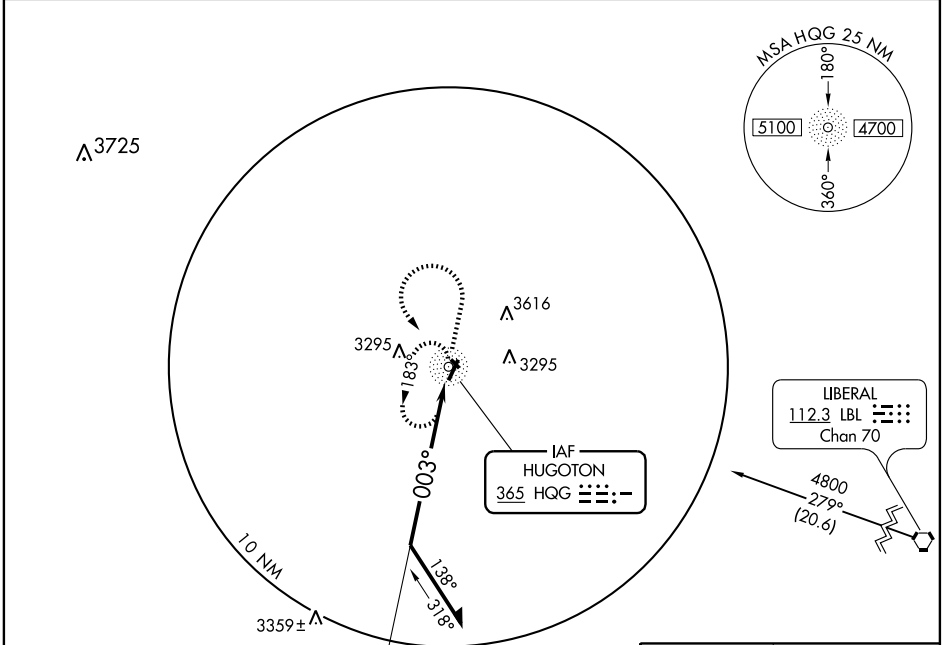
HUGOTON MUNI (HQQ)

NDB HQG <b>365</b>	APP CRS <b>003°</b>	Rwy Idg <b>5000</b>
		TDZE <b>3133</b>
		Apt Elev <b>3134</b>

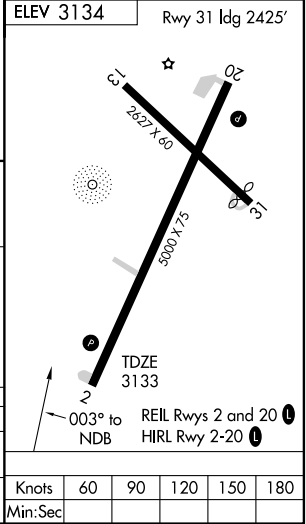
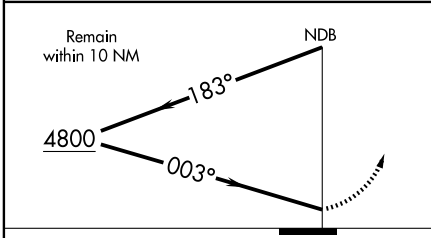
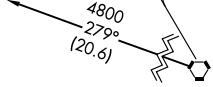
**▽** If local altimeter setting not received, use Liberal altimeter setting and increase all MDAs 100 feet.  
**△ NA** Visibility reduction by helicopters NA.

MISSED APPROACH: Climb to 4200 then climbing left turn to 4800 direct HQG NDB and hold.

AWOS-3 <b>118.6</b>	KANSAS CITY CENTER <b>134.0 290.8</b>	UNICOM <b>122.8 (CTAF) 0</b>
------------------------	--	---------------------------------



LIBERAL  
112.3 LBL  
Chan 70



CATEGORY	A	B	C	D
S-2	3720-1	587 (600-1)	3720-1½ 587 (600-1½)	NA
CIRCLING	3720-1	586 (600-1)	3720-1½ 586 (600-1½)	NA

Knots	60	90	120	150	180
Min:Sec					

HUGOTON, KANSAS  
Amdt 3 07298

37°10'N-101°22'W

# HUGOTON MUNI (HQQ) NDB RWY 2

NC-2, 22 OCT 2009 to 19 NOV 2009

NC-2, 22 OCT 2009 to 19 NOV 2009