

# RNAV (GPS) RWY 28

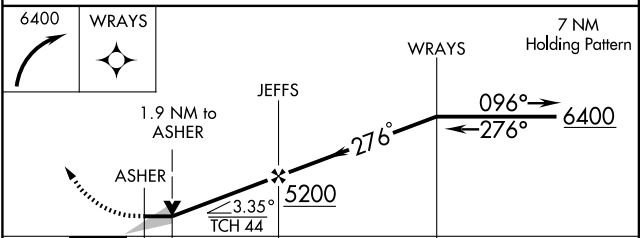
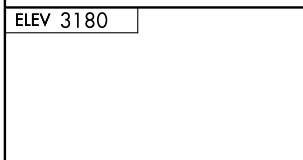
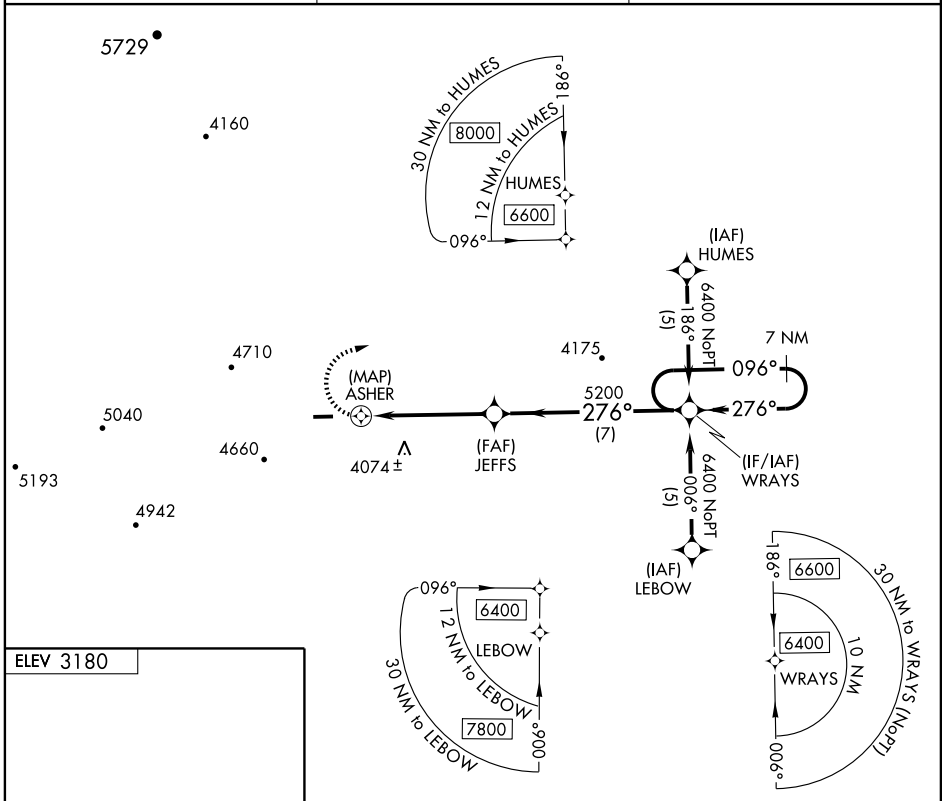
JEFFERSON/ ASHE COUNTY (GEV)

APP CRS	Rwy Idg	<b>4293</b>
<b>276°</b>	TDZE	<b>3156</b>
	Apt Elev	<b>3180</b>

**⚠** DME/DME RNP-0.3 NA. VDP NA when using Mountain Empire altimeter setting. When local altimeter setting not received, use Mountain Empire altimeter setting and increase all MDA 160 feet.

**MISSED APPROACH:** Climbing right turn to 6400 direct WRAYS and hold.

AWOS-3 <b>120.675</b>	ATLANTA CENTER <b>125.15 263.0</b>	UNICOM <b>122.8 (CTAF) 0*</b>
--------------------------	---------------------------------------	----------------------------------



CATEGORY	A	B	C	D
LNAV MDA	4160-1¼ 1004 (1000-1¼)	4160-1½ 1004 (1000-1½)	4160-3	1004 (1000-3)
CIRCLING	4280-1¼ 1100 (1100-1¼)	4280-1½ 1100 (1100-1½)	4280-3	4680-3 1500 (1500-3)

REIL Rwy 28 0\*  
MIRL Rwy 10-28 0\*

SE-2, 22 OCT 2009 to 19 NOV 2009

SE-2, 22 OCT 2009 to 19 NOV 2009