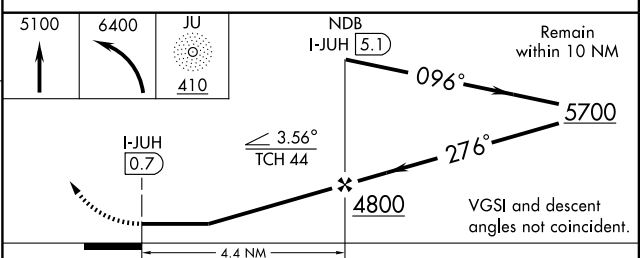
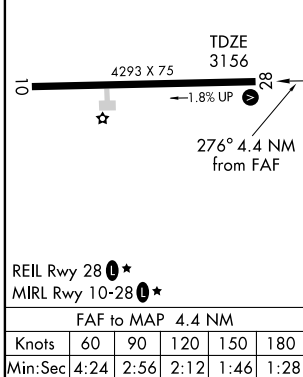
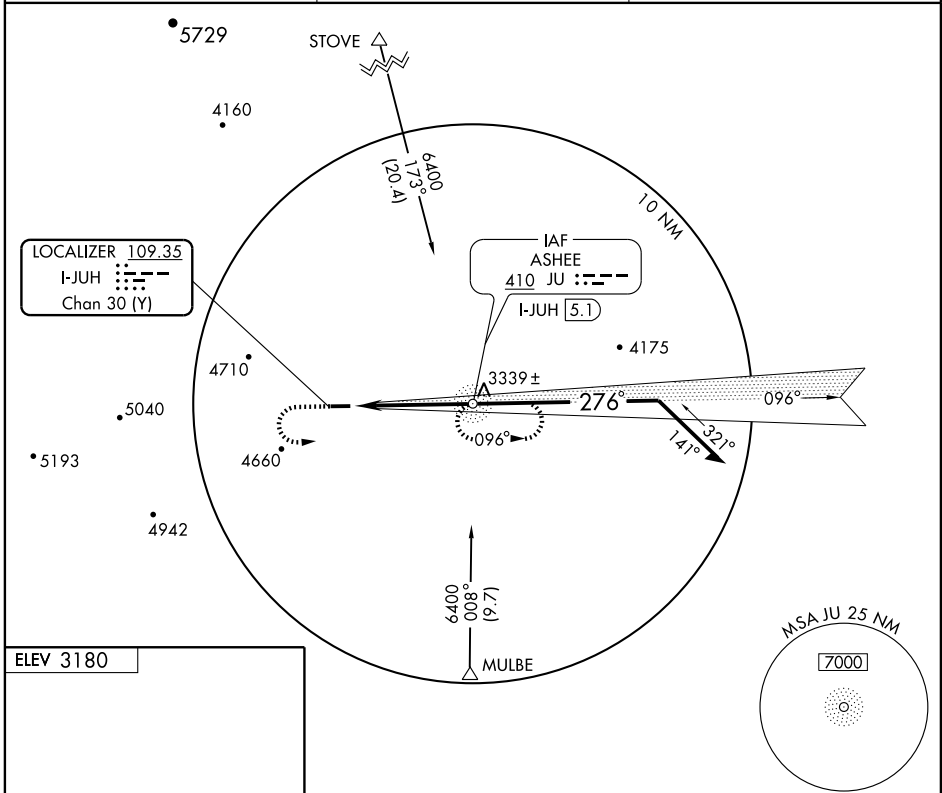


LOC/DME I-JUH 109.35 Chan 30(Y)	APP CRS 276°	Rwy Idg 4293 TDZE 3156 Apt Elev 3180
---	------------------------	---

LOC RWY 28
JEFFERSON/ ASHE COUNTY (GEV)

<p>ADF REQUIRED</p> <p>NA</p>	<p>MISSED APPROACH: Climb to 5100 then climbing left turn to 6400 direct JU NDB and hold.</p>
--------------------------------------	---

<p>AWOS-3 120.675</p>	<p>ATLANTA CENTER 125.15 263.0</p>	<p>UNICOM 122.8 (CTAF) 0*</p>
----------------------------------	---	--



CATEGORY	A	B	C	D
S-28	4300-1¼ 1144 (1200-1¼)	4300-1½ 1144 (1200-1½)	4300-3	1144 (1200-3)
CIRCLING	4300-1¼ 1120 (1200-1¼)	4300-1½ 1120 (1200-1½)	4300-3	4680-3 1500 (1500-3)

SE-2, 22 OCT 2009 to 19 NOV 2009

SE-2, 22 OCT 2009 to 19 NOV 2009