

WEST DOVER, VERMONT

AL-6788 (FAA)

NDB RWY 1

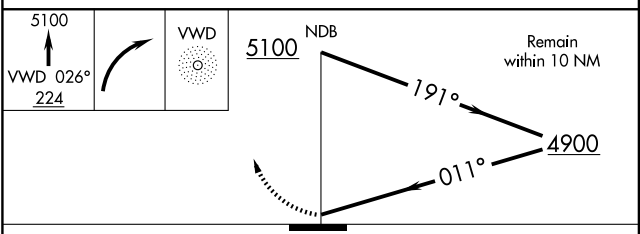
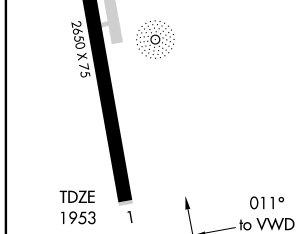
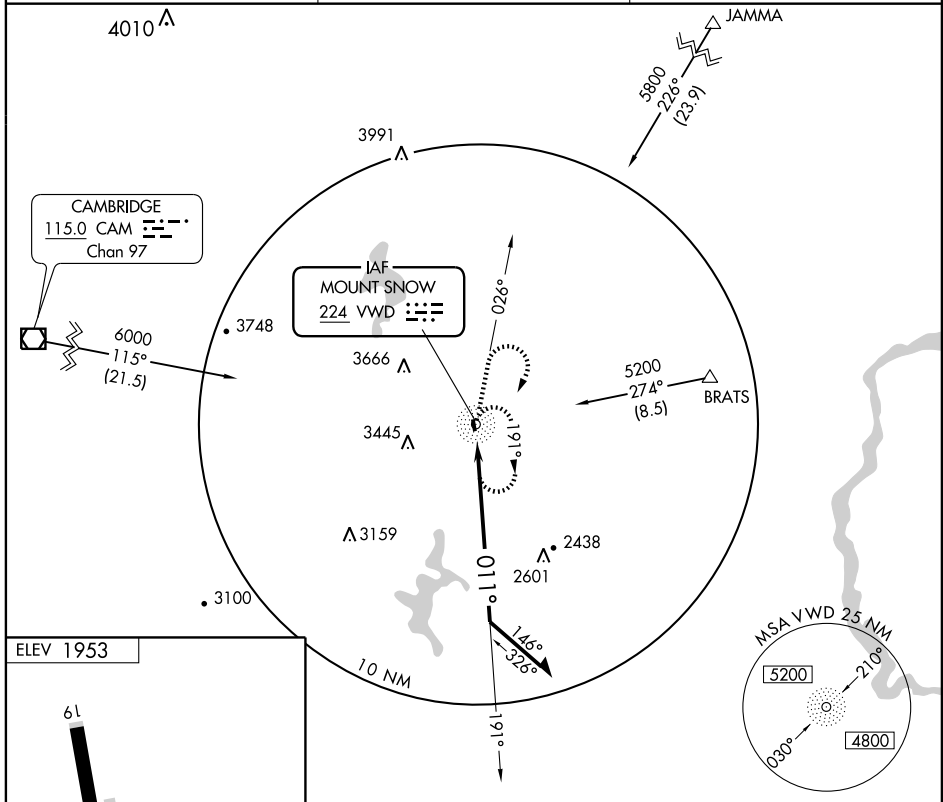
WEST DOVER/MOUNT SNOW (4V8)

VWD NDB 224	APP CRS 011°	Rwy Idg TDZE Apt Elev	2650 1953 1953
-----------------------	------------------------	-----------------------------	---

▼ Use Bennington altimeter setting; if not received, use Keene altimeter setting and increase all MDAs 40 feet.
▲ NA Procedure NA 0200 local to dawn. Circling to Rwy 19 NA at night.

MISSED APPROACH: Climb to 5100 via 026° bearing from VWD NDB then right turn direct VWD NDB and hold.

BENNINGTON ASOS 135.925	BOSTON CENTER 123.75 338.2	UNICOM 122.8 (CTAF)
-----------------------------------	--------------------------------------	-------------------------------



CATEGORY	A	B	C	D
S-1	3480-1¼ 1527 (1600-1¼)	3480-1½ 1527 (1600-1½)		NA
CIRCLING	3480-1¼ 1527 (1600-1¼)	3480-1½ 1527 (1600-1½)		NA

WEST DOVER, VERMONT
Amdt 1 07298

42°56'N - 72°52'W

WEST DOVER/MOUNT SNOW (4V8)

NDB RWY 1

NE-1, 22 OCT 2009 to 19 NOV 2009

NE-1, 22 OCT 2009 to 19 NOV 2009