

BALDWIN, MICHIGAN

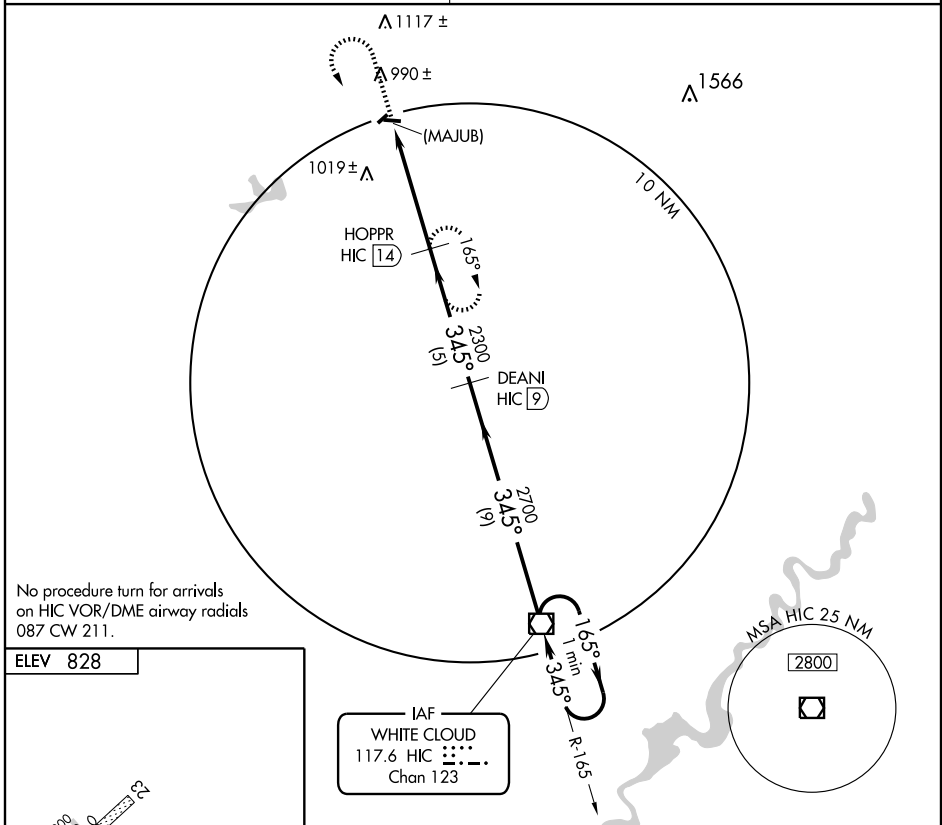
AL-6787 (FAA)

VOR/DME HIC 117.6 Chan 123	APP CRS 345°	Rwy Idg TDZE Apt Elev	N/A N/A 828
--	------------------------	-----------------------------	--------------------------

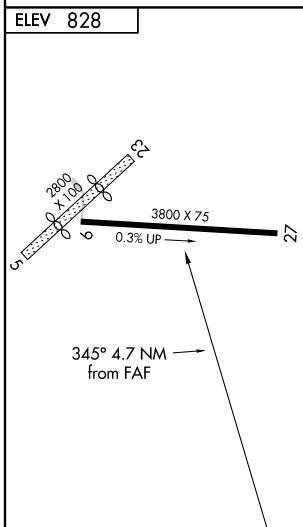
VOR/DME or GPS-A

BALDWIN MUNI (7D3)

<p>▼ Use Manistee altimeter setting. ▲ NA Procedure not authorized at night.</p>	<p>MISSED APPROACH: Climb to 2600, then left turn via the HIC VOR/DME R-345 to HOPPR/14 DME and hold.</p>
<p>MINNEAPOLIS CENTER 120.85 322.35</p>	<p>CTAF 122.9</p>



No procedure turn for arrivals on HIC VOR/DME airway radials 087 CW 211.



<p>2600</p> <p>HIC R-345 117.6</p> <p>HOPPR INT</p>	<p>VOR/DME</p> <p>One Minute Holding Pattern</p>				
	<p>HOPPR HIC 14</p> <p>(MAJUB) HIC 18.7</p> <p>2300</p> <p>4.7 NM</p>	<p>DEANI HIC 9</p> <p>5 NM</p>	<p>2700</p> <p>165°</p> <p>345°</p> <p>2700</p> <p>9 NM</p>		
CATEGORY	A	B	C	D	
CIRCLING	1400-1	572 (600-1)	1400-1½ 572 (600-1½)	NA	

BALDWIN, MICHIGAN
Amdt 1 09295

43°53'N - 85°51'W

BALDWIN MUNI (7D3)

VOR/DME or GPS-A

EC-1, 22 OCT 2009 to 19 NOV 2009

EC-1, 22 OCT 2009 to 19 NOV 2009