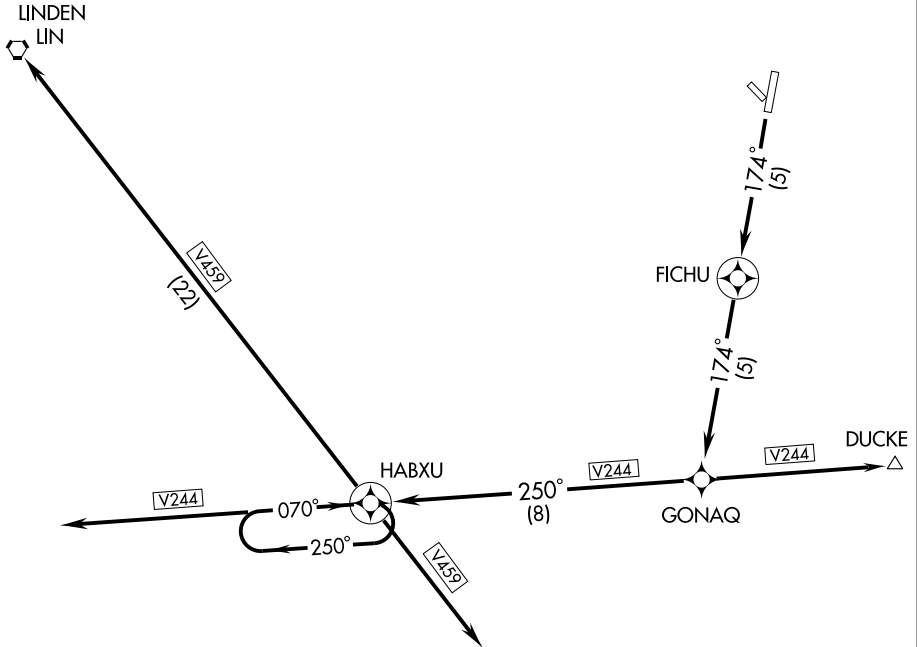


# FICHU ONE DEPARTURE (RNAV) (OBSTACLE)

NORCAL DEP CON  
(N) 123.7 338.25  
(W) 125.1 363.2  
OAKLAND CENTER  
(E) 126.85 322.55  
RANCHO MURIETA RADIO  
122.3



NOTE: Runway 17: 300-1 with a climb rate of 300' per NM to 3000'.

- NOTE: 1. GPS Required.  
2. RNAV 1

NOTE: Chart not to scale.



## DEPARTURE ROUTE DESCRIPTION

TAKE-OFF RUNWAY 17: Climb to 4000 via 174° course to FICHU WP, 174° course to GONAQ WP, 250° course to HABXU WP; Aircraft V-459 southeast, northwest and V-244 westbound proceed on course; Aircraft departing V-244 eastbound climb in HABXU WP holding pattern to 8000, Then proceed on course.

TAKE-OFF RUNWAY 35: Not authorized.