

RNAV (GPS) RWY 31

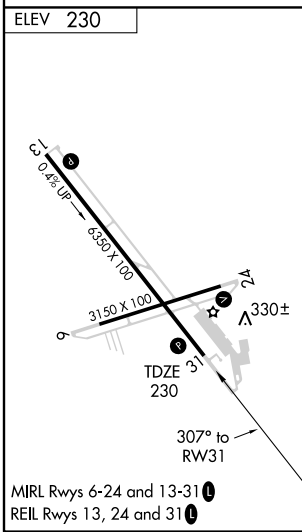
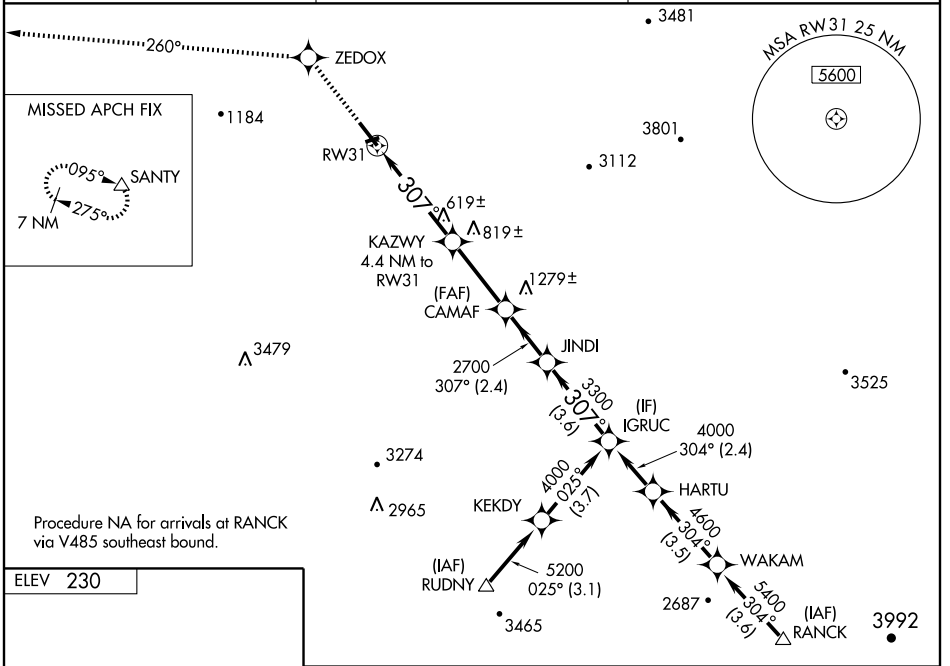
HOLLISTER MUNI (CVH)

WAAS CH 93806 W31A	APP CRS 307°	Rwy Idg TDZE Apt Elev	6350 230 230
----------------------------------------	------------------------	-----------------------------	-----------------------------------------

⚠ DME/DME RNP-0.3 NA. Visibility reduction by helicopters NA.
⚠ Baro-VNAV NA when using Norman Y. Mineta (KSJC) San Jose Intl altimeter setting.
 For uncompensated Baro-VNAV systems, LNAV/VNAV NA below -15°C (5°F) or above 54°C (130°F).
 When local altimeter setting not received, use Norman Y. Mineta (KSJC) San Jose Intl altimeter setting, and increase all DAs/MDAs 120 feet and all visibilities ½ mile.
 VDP NA when using Norman Y. Mineta (KSJC) San Jose Intl altimeter setting.

MISSED APPROACH: Climb to 7000 direct ZEDOX and via 260° track to SANTY and hold, continue climb-in-hold to 7000.

AWOS-3 120.425	NORCAL APP CON 124.525 348.675	UNICOM 123.0 (CTAF)
--------------------------	------------------------------------------	-------------------------------



7000	ZEDOX	260° track	SANTY	Procedure Turn NA
*LNAV only	KAZWY	CAMAF	JINDI	IGRUC
	*1.9 NM to RW31	4.4 NM to RW31	307°	4000
	1580*	2700	3300	GS 3.00° TCH 40
	1.9 NM	2.5 NM	3.1 NM	2.4 NM
CATEGORY	A	B	C	D
LPV DA	553-1¼ 323 (400-1¼)			NA
LNAV/VNAV DA	801-2 571 (600-2)			NA
LNAV MDA	880-1	650 (700-1)	880-1¾ 650 (700-1¾)	NA
CIRCLING	880-1	650 (700-1)	880-1¾ 650 (700-1¾)	NA

SW-2, 22 OCT 2009 to 19 NOV 2009

SW-2, 22 OCT 2009 to 19 NOV 2009