

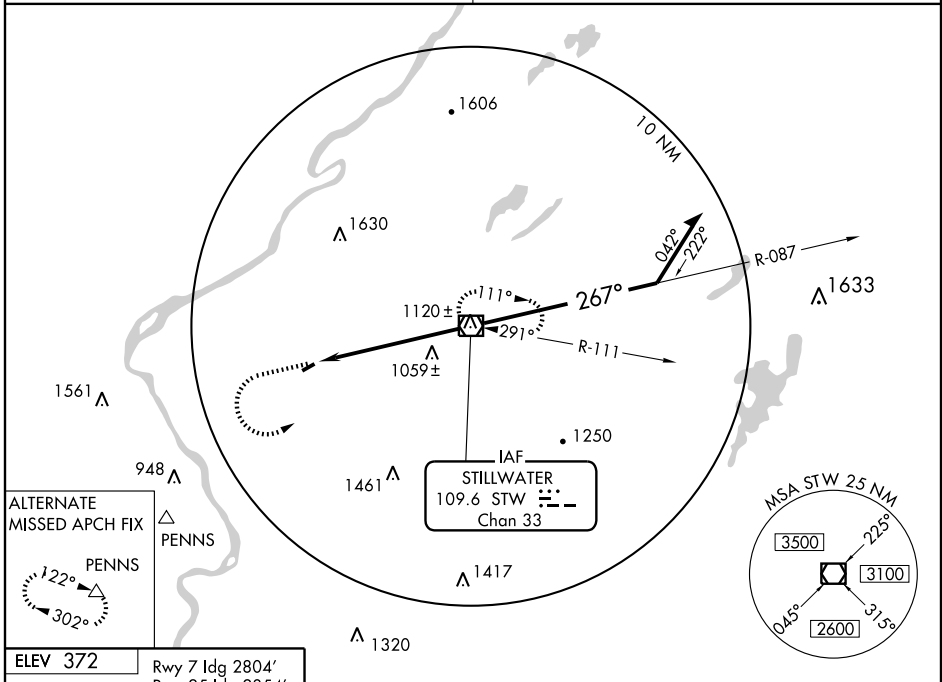
VOR/DME STW 109.6 Chan 33	APP CRS 267°	Rwy Idg 2854 TDZE 371 Apt Elev 372
---	------------------------	---

VOR RWY 25
BLAIRSTOWN (1N7)

▼ When local altimeter setting not received, use Lehigh Valley altimeter setting.
▲ NA Circling to Rwy 7 NA at night.

MISSED APPROACH: Climbing left turn to 3000 direct STW VOR/DME and hold.

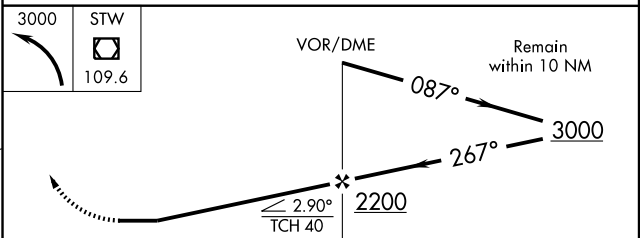
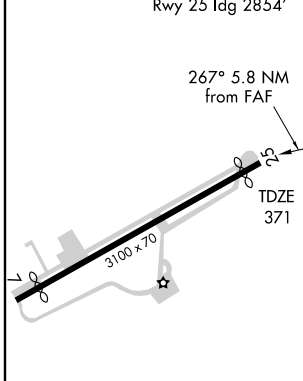
NEW YORK APP CON **127.6 379.9**
 UNICOM **123.0 (CTAF) 0**



NE-2, 22 OCT 2009 to 19 NOV 2009

NE-2, 22 OCT 2009 to 19 NOV 2009

ELEV 372	Rwy 7 Idg 2804'
	Rwy 25 Idg 2854'



CATEGORY	A	B	C	D
S-25	1320-1¼	949 (1000-1¼)		NA
CIRCLING	1320-1¼	948 (1000-1¼)		NA
LEHIGH VALLEY ALTIMETER SETTING MINIMUMS				
S-25	1600-1¼ 1229 (1300-1¼)	1600-1½ 1229 (1300-1½)		NA
CIRCLING	1600-1¼ 1228 (1300-1¼)	1600-1½ 1228 (1300-1½)		NA

MIRL Rwy 7-25 0

FAF to MAP 5.8 NM

Knots	60	90	120	150	180
Min:Sec	5:48	3:52	2:54	2:19	1:56