

RNAV (GPS) RWY 25

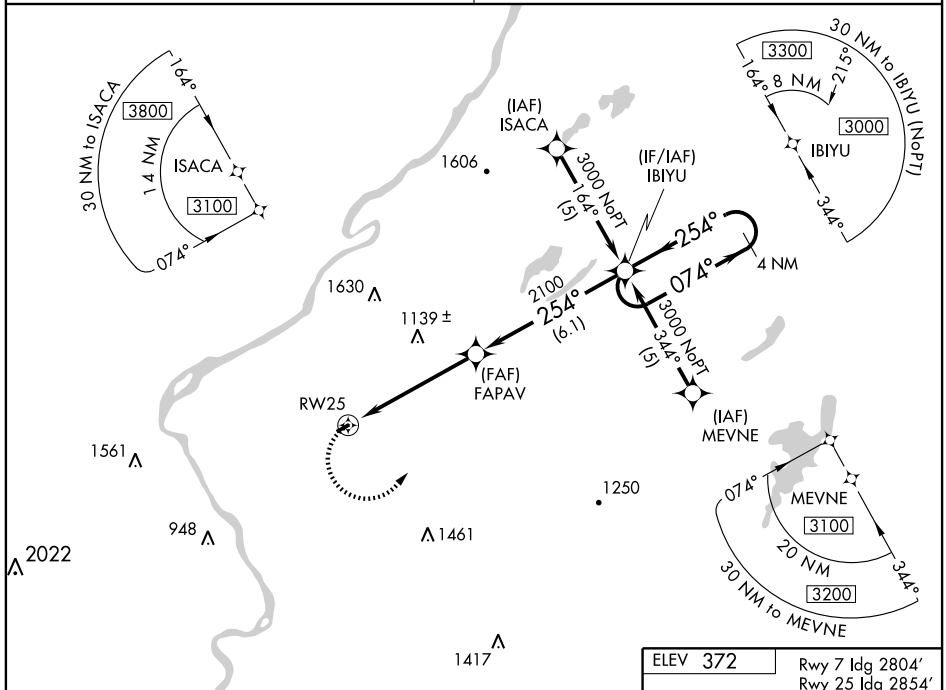
BLAIRSTOWN (1N7)

APP CRS 254°	Rwy Idg TDZE Apt Elev	2854 371 372
------------------------	-----------------------------	---

⚠ When local altimeter setting not received, use Lehigh Valley altimeter setting. Circling to Rwy 7 NA at night. DME/DME RNP-0.3 NA.

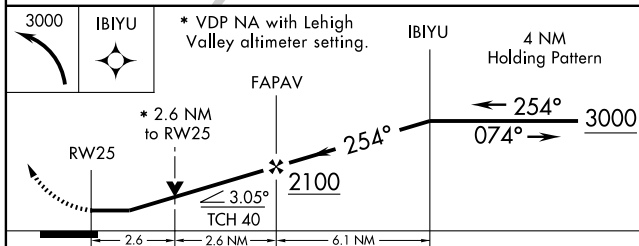
MISSED APPROACH: Climbing left turn to 3000 direct IBIYU and hold.

NEW YORK APP CON **127.6 379.9** UNICOM **123.0 (CTAF) 0**



NE-2, 22 OCT 2009 to 19 NOV 2009

NE-2, 22 OCT 2009 to 19 NOV 2009



CATEGORY	A	B	C	D
LNVA MDA	1260-1¼	889 (900-1¼)		NA
CIRCLING	1260-1¼ 888 (900-1¼)	1280-1¼ 908 (1000-1¼)		NA
LEHIGH VALLEY ALTIMETER SETTING MINIMUMS				
LNVA MDA	1540-1¼ 1169 (1200-1¼)	1540-1½ 1169 (1200-1½)		NA
CIRCLING	1540-1¼ 1168 (1200-1¼)	1560-1½ 1188 (1200-1½)		NA

