

ABILENE, KANSAS

AL-6782 (FAA)

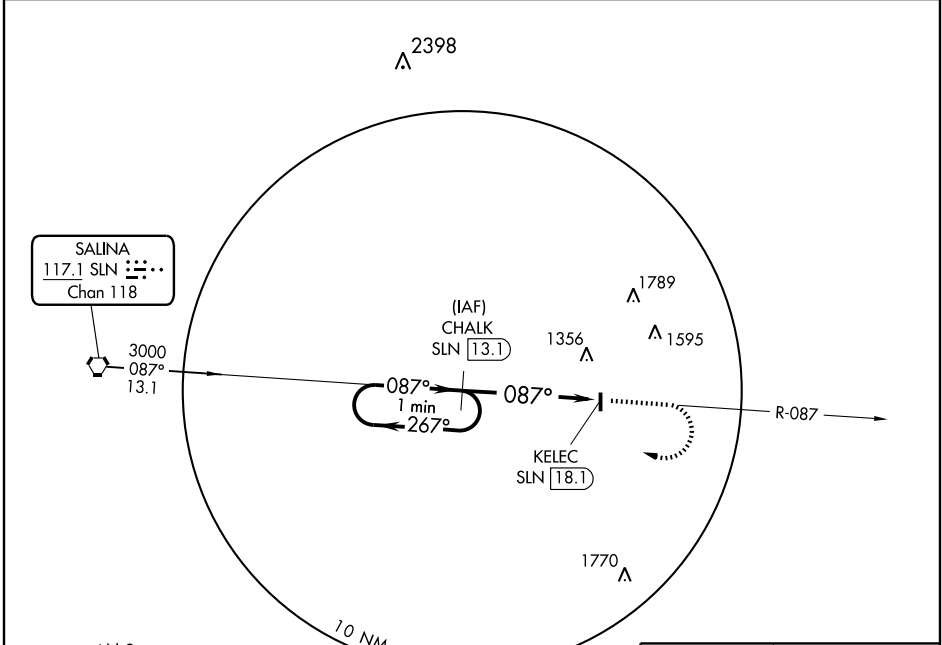
VOR/DME-A
ABILENE MUNI (K78)

VORTAC SLN 117.1 Chan 118	APP CRS 087°	Rwy Idg TDZE Apt Elev	N/A N/A 1152
---	------------------------	-----------------------------	---

▲ NA Use Salina altimeter setting; if not received, use Manhattan Rgnl altimeter setting and increase all MDAs 20 feet.

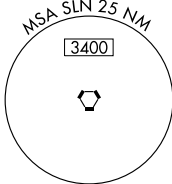
MISSED APPROACH: Climb to 2600, then climbing right turn to 3000 via heading 320° and SLN R-087 to CHALK 13.1 DME and hold.

KANSAS CITY CENTER 134.9 363.2	UNICOM 122.8 (CTAF)
--	-------------------------------

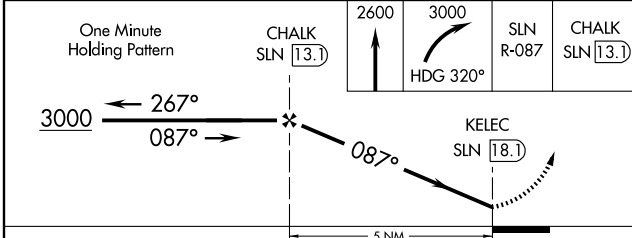
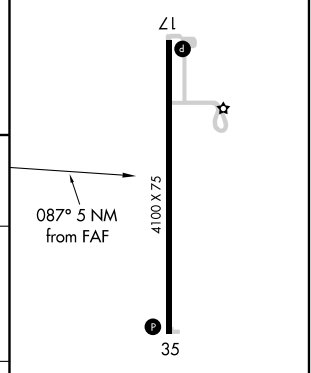


NC-2, 22 OCT 2009 to 19 NOV 2009

NC-2, 22 OCT 2009 to 19 NOV 2009



ELEV 1152
REIL Rwy 17 and 35
MIRL Rwy 17-35



CATEGORY	A	B	C	D	Knots	60	90	120	150	180
CIRCLING	1740-1	588 (600-1)	1740-1½ 588 (600-1½)	NA	Min:Sec					

ABILENE, KANSAS
Amdt 3 08269

38°54' N-97°14' W

ABILENE MUNI (K78)
VOR/DME-A