

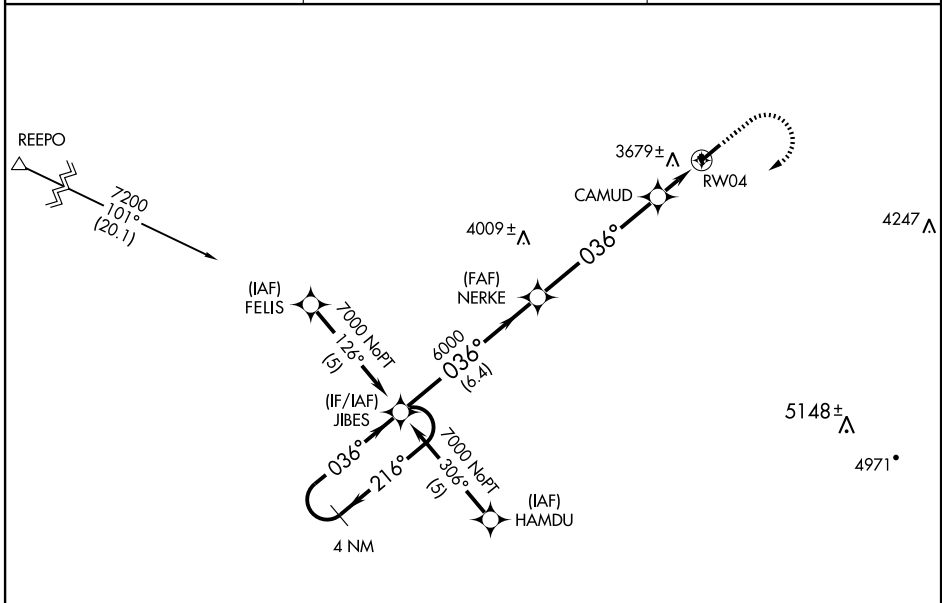
RNAV (GPS) RWY 4

LAUREL MUNI (6S8)

APP CRS 036°	Rwy Idg 5200
	TDZE 3488
	Apt Elev 3517

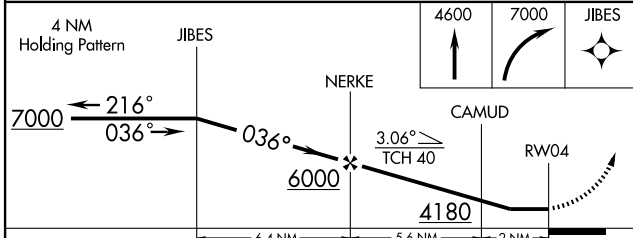
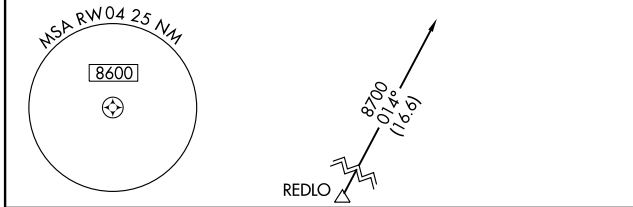
▽ GPS or RNP-0.3 required. DME/DME RNP-0.3 NA. **▲NA** Use Billings altimeter setting. MISSED APPROACH: Climb to 4600 then climbing right turn to 7000 direct JIBES WP and hold.

AWOS-3 123.05	BILLINGS APP CON 119.2 120.5 284.6	UNICOM 123.05 (CTAF) 0
-------------------------	--	----------------------------------



NW-1, 22 OCT 2009 to 19 NOV 2009

NW-1, 22 OCT 2009 to 19 NOV 2009



ELEV 3517 Rwy 32 Idg 1695'

TDZE 3488

3529

32

27

2209 X 50

5200 X 75

2.3% UP

1100 X 60

0.8% UP

0.8% UP

036° to RW04

MIRL Rwy 4-22 0

CATEGORY	A	B	C	D
LNNAV	4120-1	632 (700-1)	4120-1¾ 632 (700-1¾)	4120-2 632 (700-2)
CIRCLING	4220-1	703 (800-1)	4220-2 703 (800-2)	4340-2¾ 823 (900-2¾)