

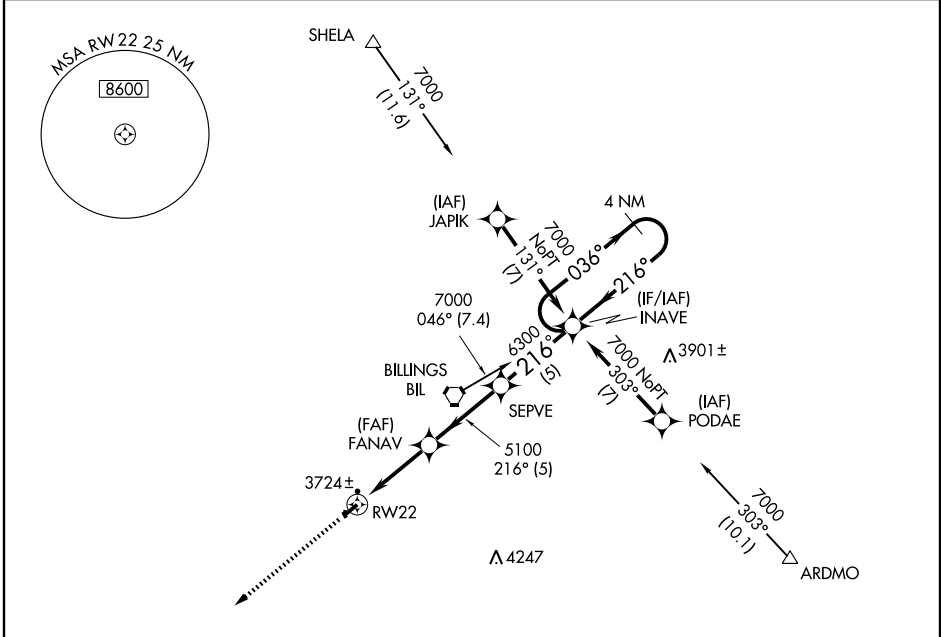
# RNAV (GPS) RWY 22

LAUREL MUNI (6S8)

APP CRS <b>216°</b>	Rwy ldg TDZE Apt Elev	<b>5200</b> <b>3472</b> <b>3517</b>
------------------------	-----------------------------	---

**▽** GPS or RNP-0.3 required. DME/DME RNP-0.3 NA.  
**▲ NA** Use Billings altimeter setting.  
 MISSED APPROACH: Climb to 7000 direct JIBES WP and hold.

AWOS-3 <b>123.05</b>	BILLINGS APP CON <b>119.2 120.5 284.6</b>	UNICOM <b>123.05 (CTAF) 0</b>
-------------------------	--	----------------------------------



NW-1, 22 OCT 2009 to 19 NOV 2009

NW-1, 22 OCT 2009 to 19 NOV 2009

