

OKOLONA, MISSISSIPPI

AL-6780 (FAA)

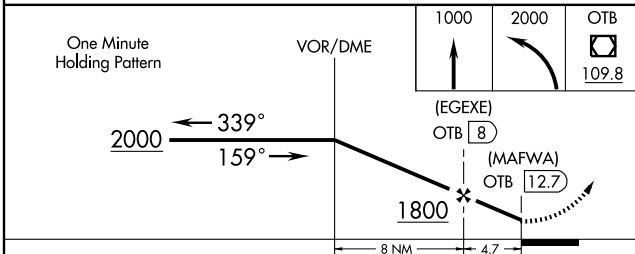
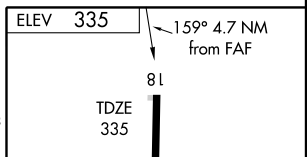
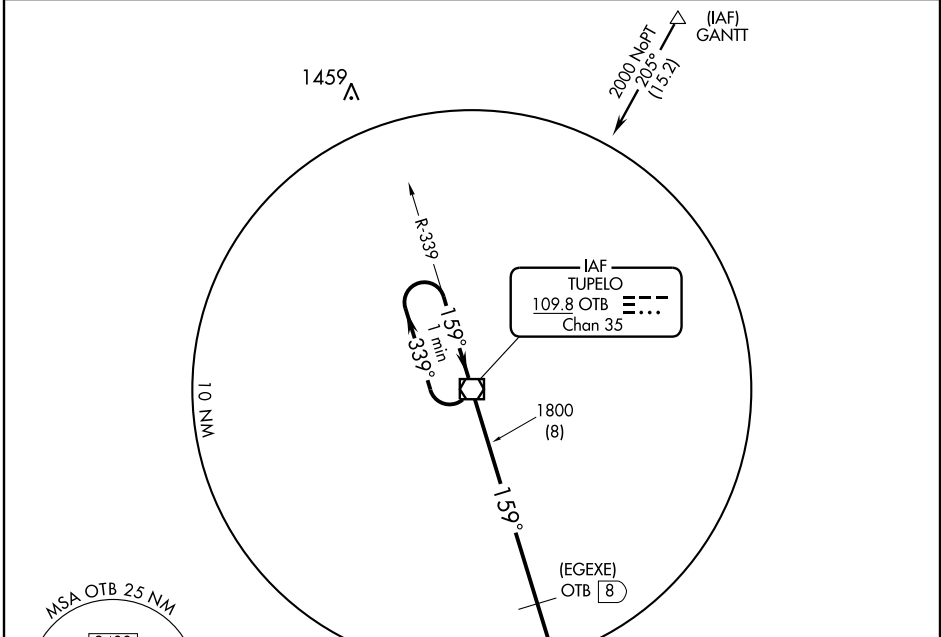
VOR/DME or GPS RWY 18

OKOLONA MUNI-RICHARD STOVALL FIELD (5A4)

VOR/DME OTB 109.8 Chan 35	APP CRS 159°	Rwy Idg TDZE Apt Elev	3200 335 335
---	------------------------	-----------------------------	---

▼ Use Tupelo altimeter setting.
▲ NA MISSED APPROACH: Climb to 1000 then climbing left turn to 2000 direct OTB VOR/DME and hold.

COLUMBUS APP CON ★ **126.075 229.15** CTAF **122.9 0**



CATEGORY	A	B	C	D
S-18	860-1	525 (600-1)	860-1½ 525 (600-1½)	NA
CIRCLING	920-1	585 (600-1)	920-1½ 585 (600-1½)	NA

ELEV	335
TDZE	335
MIRL Rwy 18-36	0
Knots	60 90 120 150 180
Min:Sec	

OKOLONA, MISSISSIPPI
Amdt 5 06271

34°-01'N - 88°44'W

VOR/DME or GPS RWY 18

SC-4, 22 OCT 2009 to 19 NOV 2009

SC-4, 22 OCT 2009 to 19 NOV 2009