

# RNAV (GPS) RWY 30

RAYMOND/JOHN BELL WILLIAMS (M16)

APP CRS <b>301°</b>	Rwy Idg <b>5501</b>
	TDZE <b>247</b>
	Apt Elev <b>247</b>

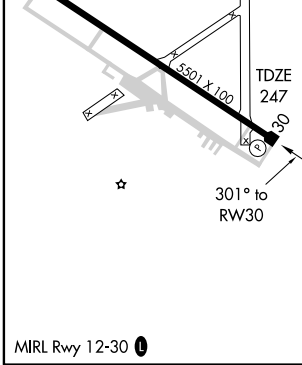
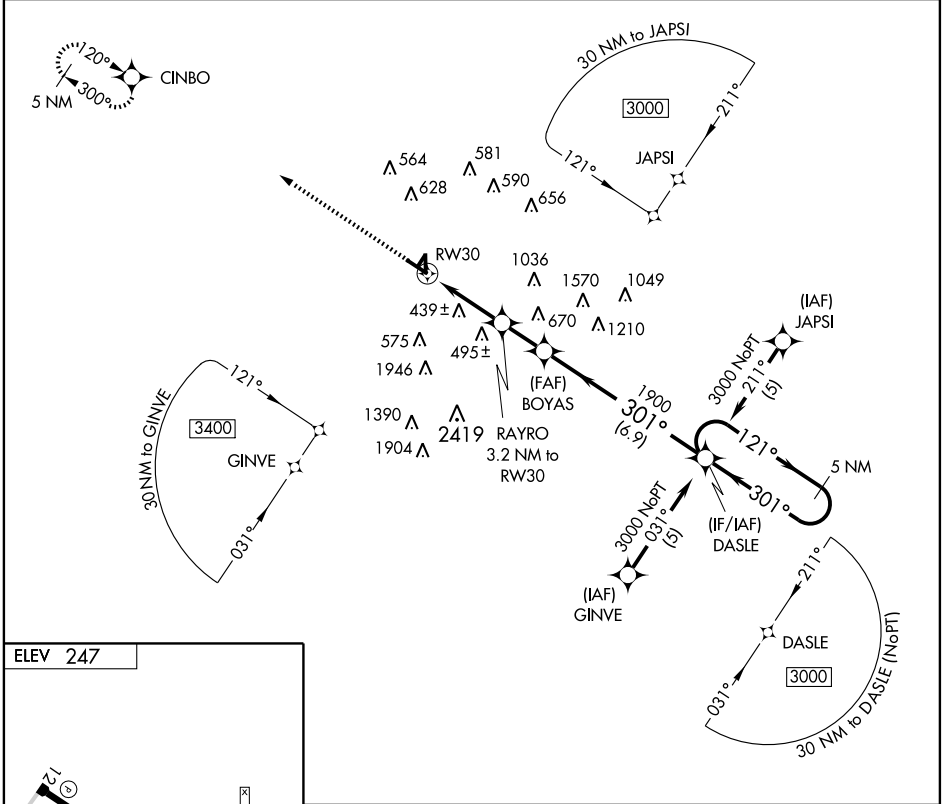
**▼** Straight in and circling to Rwy 30 NA at night. If local altimeter setting not received, use Hawkins altimeter setting and increase all MDAs 40 feet.  
**▲** DME/DME RNP-0.3 NA. Visibility reduction by helicopters NA.

**MISSED APPROACH:** Climb to 3000 direct CINBO and hold.

AWOS-3  
**118.675**

JACKSON APP CON\*  
**125.25 319.2**

UNICOM  
**122.8 (CTAF) 0**



3000 CINBO	VGS1 and descent angles not coincident.		5 NM Holding Pattern	
	RAYRO 3.2 NM to RW30	BOYAS	DASLE	
	1280	1900	3000	
	3.04° TCH 40		121° → 301° ←	
	3.2 NM	1.8 NM	6.9 NM	
CATEGORY	A	B	C	D
LNAV MDA	700-1	453 (500-1)	700-1¼ 453 (500-1¼)	700-1½ 453 (500-1½)
CIRCLING	800-1	553 (600-1)	800-1½ 553 (600-1½)	1060-2¾ 813 (900-2¾)

SC-4, 22 OCT 2009 to 19 NOV 2009

SC-4, 22 OCT 2009 to 19 NOV 2009