

WAAS CH 50205 W12A	APP CRS 120°	Rwy Idg 5501 TDZE 244 Apt Elev 247
--	------------------------	---

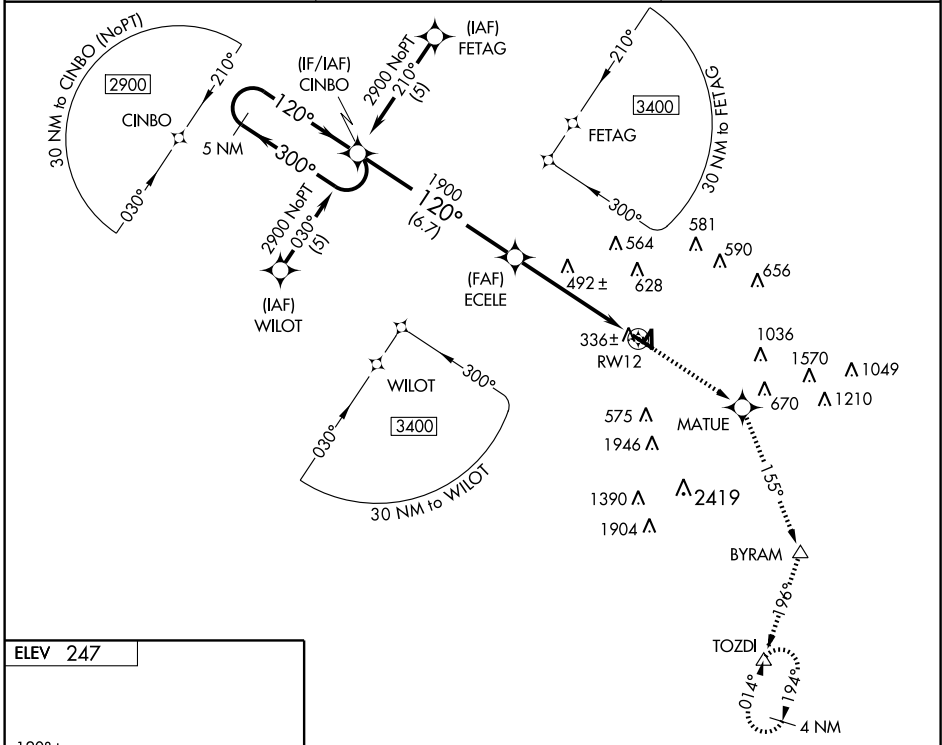
RNAV (GPS) RWY 12

RAYMOND/JOHN BELL WILLIAMS (M16)

⚠ Circling to Rwy 30 NA at night. If local altimeter setting not received, use Hawkins altimeter setting and increase all DAs/MDAs 40 feet. Visibility reduction by helicopters NA. For uncompensated BARO-VNAV systems, LNAV/VNAV NA below -15°C (5°F) or above 48°C (118°F). BARO-VNAV NA when using Hawkins altimeter setting. VDP NA when using Hawkins altimeter setting. DME/DME RNP-0.3 NA.

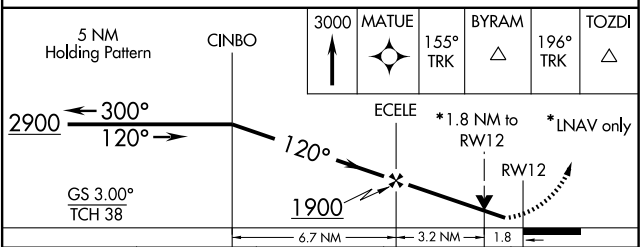
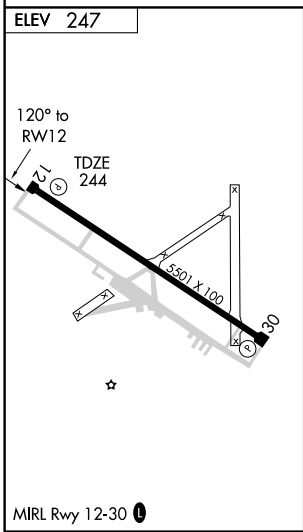
MISSED APPROACH: Climb to 3000 direct MATUE and via 155° track to BYRAM and via 196° track to TOZDI and hold.

AWOS-3 118.675	JACKSON APP CON* 125.25 319.2	UNICOM 122.8 (CTAF) 0
--------------------------	---	---------------------------------



SC-4, 22 OCT 2009 to 19 NOV 2009

SC-4, 22 OCT 2009 to 19 NOV 2009



CATEGORY	A	B	C	D
LPV DA		516-1	272 (300-1)	
LNAV/VNAV DA		770-2	526 (600-2)	
LNAV MDA	840-1	596 (600-1)	840-1½ 596 (600-1½)	840-1¾ 596 (600-1¾)
CIRCLING	840-1	593 (600-1)	840-1½ 593 (600-1½)	1060-2¾ 813 (900-2¾)