

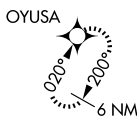
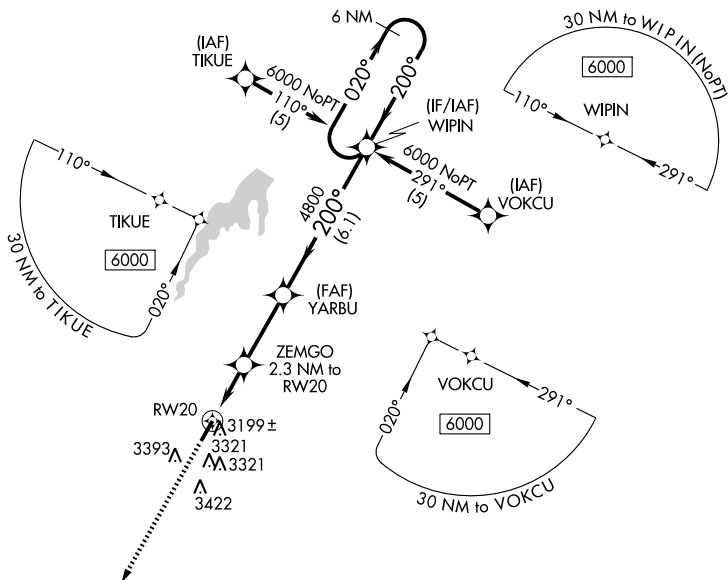
# RNAV (GPS) RWY 20

SPEARMAN MUNI (E42)

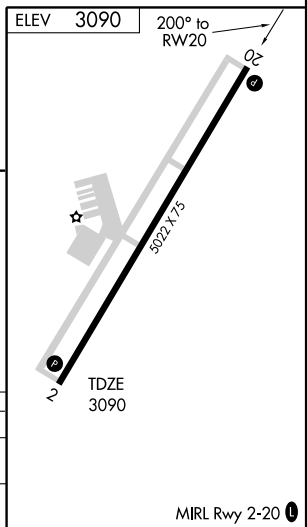
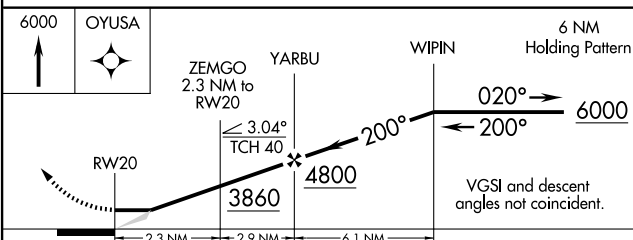
APP CRS <b>200°</b>	Rwy Idg <b>5022</b>
	TDZE <b>3090</b>
	Apt Elev <b>3090</b>

<p><b>▼</b> DME/DME RNP-0.3 NA. Use Borger altimeter setting; when not received, use Rick Husband Amarillo Intl altimeter setting and increase all MDA 140 feet.</p> <p><b>▲</b> NA</p>	<p><b>MISSED APPROACH:</b> Climb to 6000 direct OYUSA and hold, continue climb-in-hold to 6000.</p>
---	---

ALBUQUERQUE CENTER <b>127.85 285.475</b>	CTAF <b>122.9</b>	<b>122.8</b> <b>0</b>
---	----------------------	-----------------------



4090 ± **▲**



CATEGORY	A	B	C	D
RNAV MDA	3540-1	450 (500-1)	3540-1¼ 450 (500-1¼)	NA
CIRCLING	3840-1 750 (800-1)	3840-1¼ 750 (800-1¼)	3840-2¼ 750 (800-2¼)	NA

MIRL Rwy 2-20 **0**