

LINCOLN, MAINE

AL-6774 (FAA)

VOR/DME MLT <b>117.9</b> Chan <b>126</b>	APP CRS <b>203°</b>	Rwy Idg TDZE Apt Elev	<b>N/A</b> <b>N/A</b> <b>208</b>
--	------------------------	-----------------------------	--

# VOR/DME-A

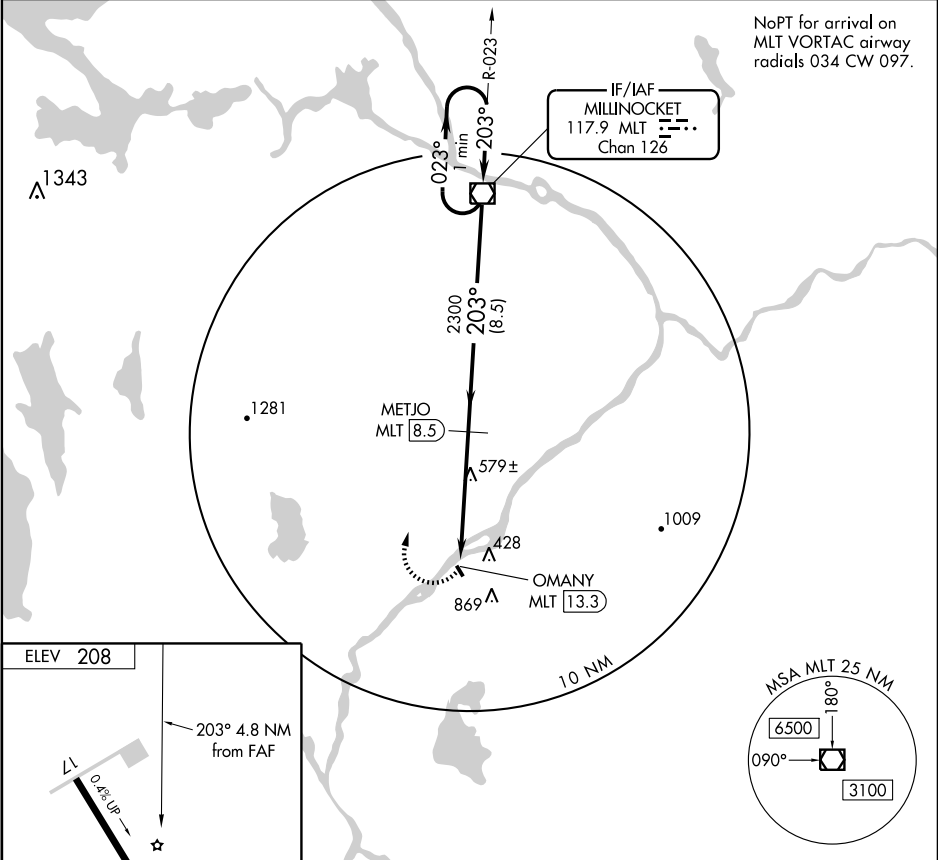
LINCOLN RGNL (LRG)

**▼** Use Millinocket altimeter setting, when not received use Bangor altimeter setting and increase all MDA 20 feet.

**MISSED APPROACH:** Climbing right turn to 2400 direct MLT VOR/DME and hold.

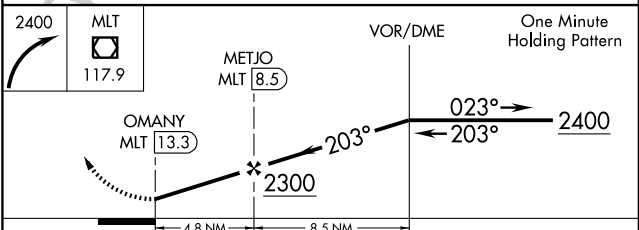
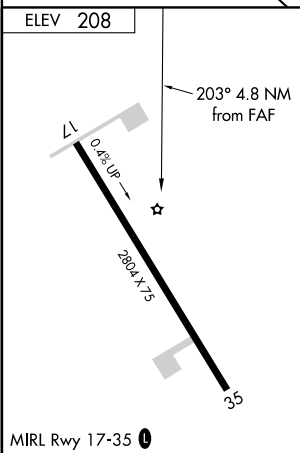
**BOSTON CENTER**  
**124.25 290.5**

**UNICOM**  
**122.8** (CTAF)



NE-1, 22 OCT 2009 to 19 NOV 2009

NE-1, 22 OCT 2009 to 19 NOV 2009



FAF to MAP 4.8 NM					
Knots	60	90	120	150	180
Min:Sec	4:48	3:12	2:24	1:55	1:36

CATEGORY	A	B	C	D
CIRCLING	1240-1¼ 1032 (1100-1¼)	1240-1½ 1032 (1100-1½)	NA	

LINCOLN, MAINE  
Amdt 2 09183

45°22'N - 68°32'W

# VOR/DME-A