

CRESCO, IOWA

AL-6773 (FAA)

# NDB RWY 33

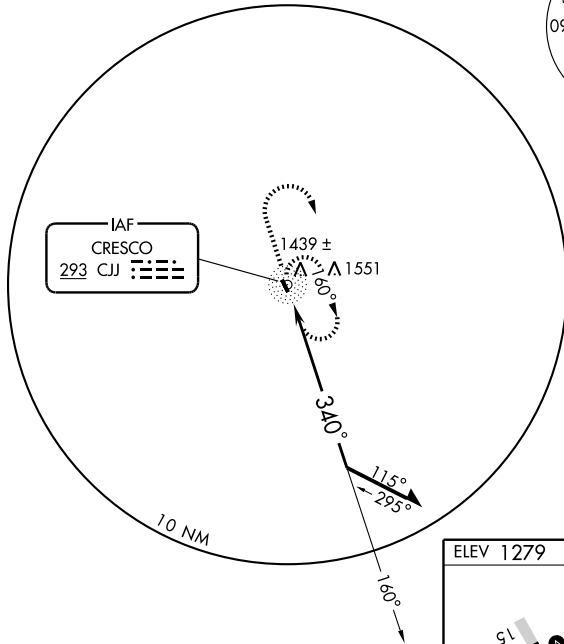
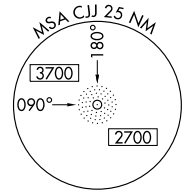
CRESCO/ELLEN CHURCH FIELD (CJJ)

NDB CJJ <b>293</b>	APP CRS <b>340°</b>	Rwy Idg TDZE Apt Elev	<b>2949</b> <b>1279</b> <b>1279</b>
-----------------------	------------------------	-----------------------------	---

Use Decorah Muni altimeter setting.
 
 MISSED APPROACH: Climb to 2900 then right turn direct CJJ NDB and hold.

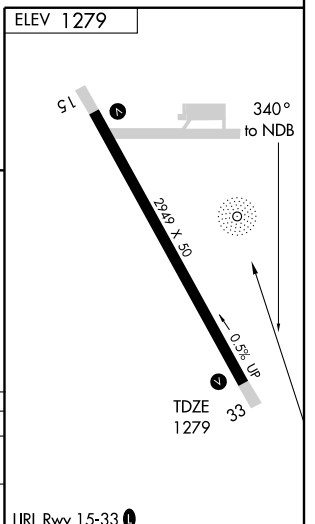
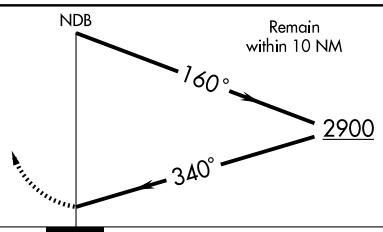
MINNEAPOLIS CENTER <b>118.85</b>	UNICOM <b>122.8</b> (CTAF)	<b>122.7</b>
-------------------------------------	-------------------------------	--------------

$\Delta$ 2642



NC-3, 22 OCT 2009 to 19 NOV 2009

NC-3, 22 OCT 2009 to 19 NOV 2009



CATEGORY	A	B	C	D
S-33	1840-1	561 (600-1)	1840-1½ 561 (600-1½)	NA
CIRCLING	1840-1	561 (600-1)	1840-1½ 561 (600-1½)	NA

CRESCO, IOWA  
Amdt 3 09071

43°22'N-92°08'W

CRESCO/ELLEN CHURCH FIELD (CJJ)  
**NDB RWY 33**