

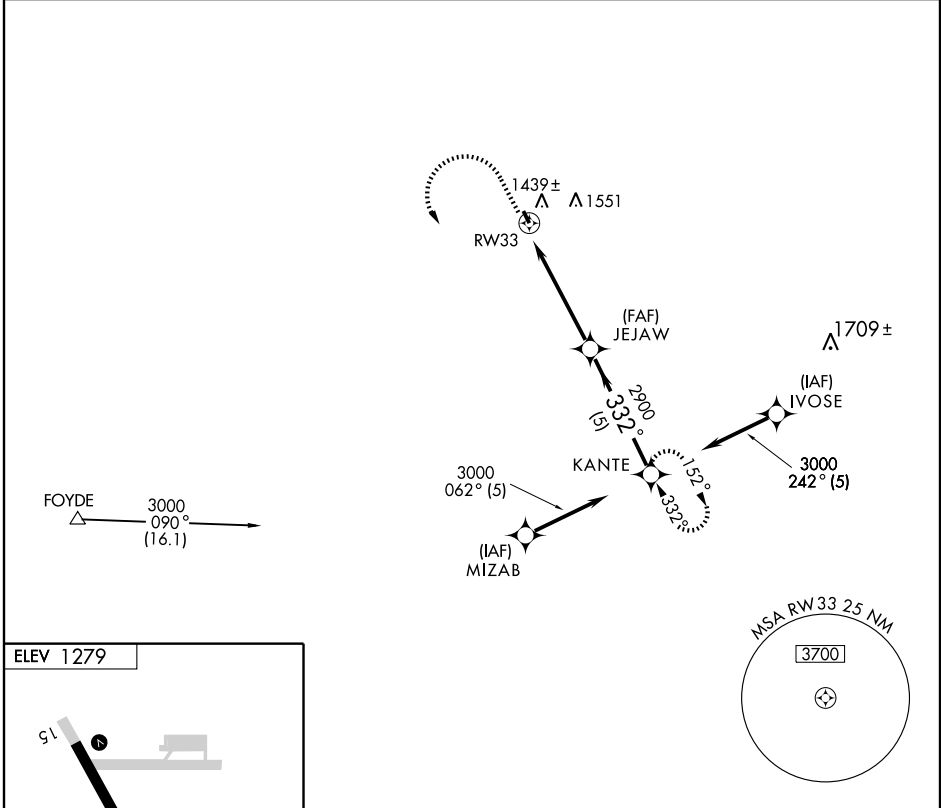
GPS RWY 33

CRESCO/ELLEN CHURCH FIELD (CJJ)

APP CRS 332°	Rwy Idg 2949
	TDZE 1279
	Apt Elev 1279

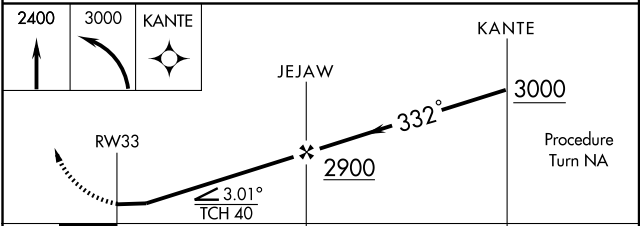
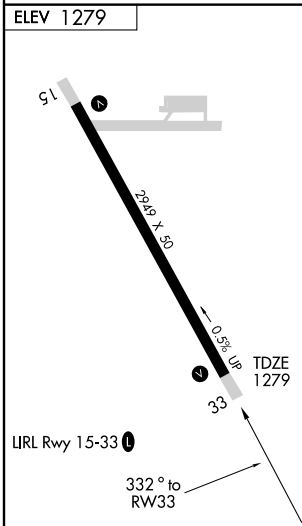
▲ Use Decorah Muni altimeter setting. MISSED APPROACH: Climb to 2400, then climbing left turn to 3000 direct KANTE WP and hold.

MINNEAPOLIS CENTER 118.85	UNICOM 122.8 (CTAF)	122.7 0
-------------------------------------	-------------------------------	-----------------------



NC-3, 22 OCT 2009 to 19 NOV 2009

NC-3, 22 OCT 2009 to 19 NOV 2009



CATEGORY	A	B	C	D
S-33	1740-1	461 (500-1)	1740-1¼ 461 (500-1¼)	NA
CIRCLING	1800-1	521 (600-1)	1800-1½ 521 (600-1½)	NA