

CRESKO, IOWA

AL-6773 (FAA)

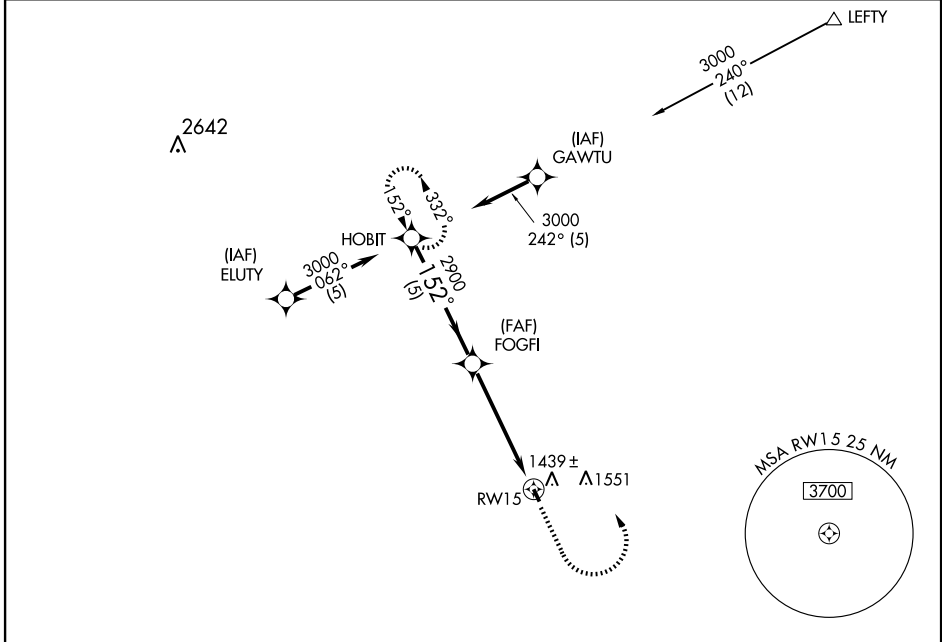
# GPS RWY 15

CRESKO/ELLEN CHURCH FIELD (CJJ)

APP CRS	Rwy Idg	<b>2949</b>
<b>152°</b>	TDZE	<b>1279</b>
	Apt Elev	<b>1279</b>

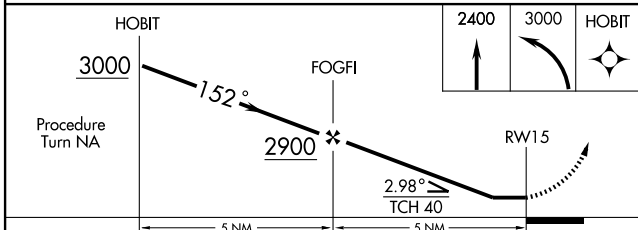
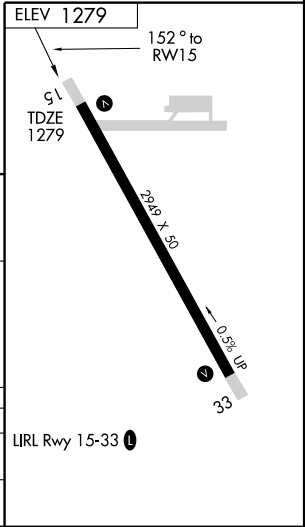
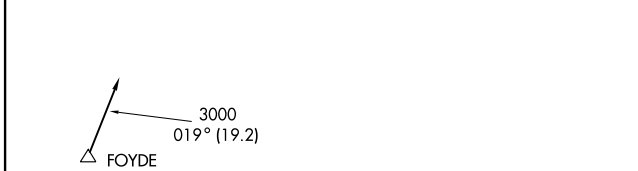
<p><b>▼</b> Use Decora Muni altimeter setting.</p> <p><b>▲ NA</b></p>	<p><b>MISSED APPROACH:</b> Climb to 2400, then climbing left turn to 3000 direct HOBIT WP amd hold.</p>
---	---

MINNEAPOLIS CENTER <b>118.85</b>	UNICOM <b>122.8</b> (CTAF)	<b>122.7</b> <b>0</b>
-------------------------------------	-------------------------------	-----------------------



NC-3, 22 OCT 2009 to 19 NOV 2009

NC-3, 22 OCT 2009 to 19 NOV 2009



CATEGORY	A	B	C	D
S-15	1980-1	701 (800-1)	1980-2 701 (800-2)	NA
CIRCLING	1980-1	701 (800-1)	1980-2 701 (800-2)	NA

CRESKO, IOWA  
Orig-A 04218

43°22'N-92°08'W

CRESKO/ELLEN CHURCH FIELD (CJJ)  
**GPS RWY 15**