

AURORA, MISSOURI

AL-6770 (FAA)

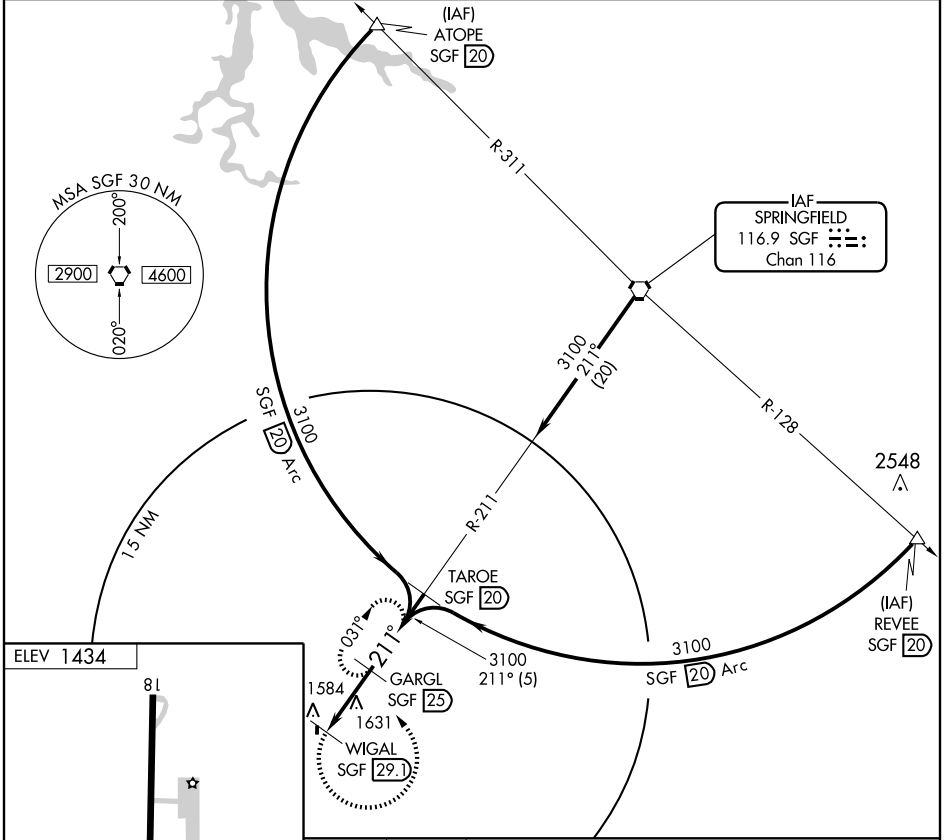
VORTAC SGF <b>116.9</b> Chan <b>116</b>	APP CRS <b>211°</b>	Rwy Idg TDZE Apt Elev <b>1434</b>	<b>NA</b> <b>NA</b> <b>1434</b>
---	------------------------	---	---------------------------------------

# VOR/DME-A

AURORA/JERRY SUMNERS SR. AURORA MUNI (2H2)

<p>▼ Use Springfield altimeter setting.</p> <p>▲ NA</p>	<p>MISSED APPROACH: Climbing left turn to 3100 via SGF R-211 to GARGL/25 DME and hold.</p>
---	--

<p>SPRINGFIELD APP CON <b>124.95 318.2</b></p>	<p>UNICOM <b>122.8 (CTAF)</b></p>
--	---------------------------------------

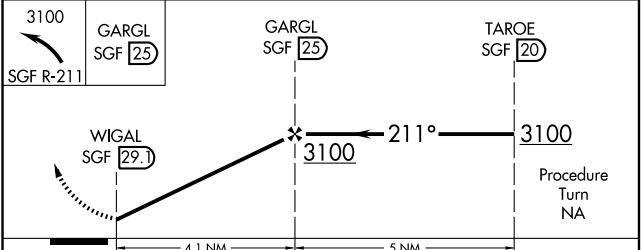


NC-3, 22 OCT 2009 to 19 NOV 2009

NC-3, 22 OCT 2009 to 19 NOV 2009

ELEV 1434

MIRL Rwy 18-36



CATEGORY	A	B	C	D
CIRCLING	1960-1 526 (600-1)	1960-1¼ 526 (600-1¼)	1960-1½ 526 (600-1½)	NA

AURORA, MISSOURI  
Amdt 4 09071

AURORA/JERRY SUMNERS SR. AURORA MUNI (2H2)  
36°58'N-93°42'W

# VOR/DME-A