

# GPS RWY 36

AURORA/JERRY SUMNERS SR. AURORA MUNI (2H2)

APP CRS	Rwy Idg	<b>3002</b>
<b>358°</b>	TDZE	<b>1434</b>
	Apt Elev	<b>1434</b>

**▼** Use Springfield altimeter setting.  
**▲** NA

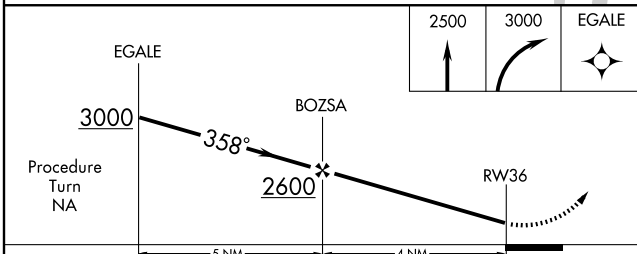
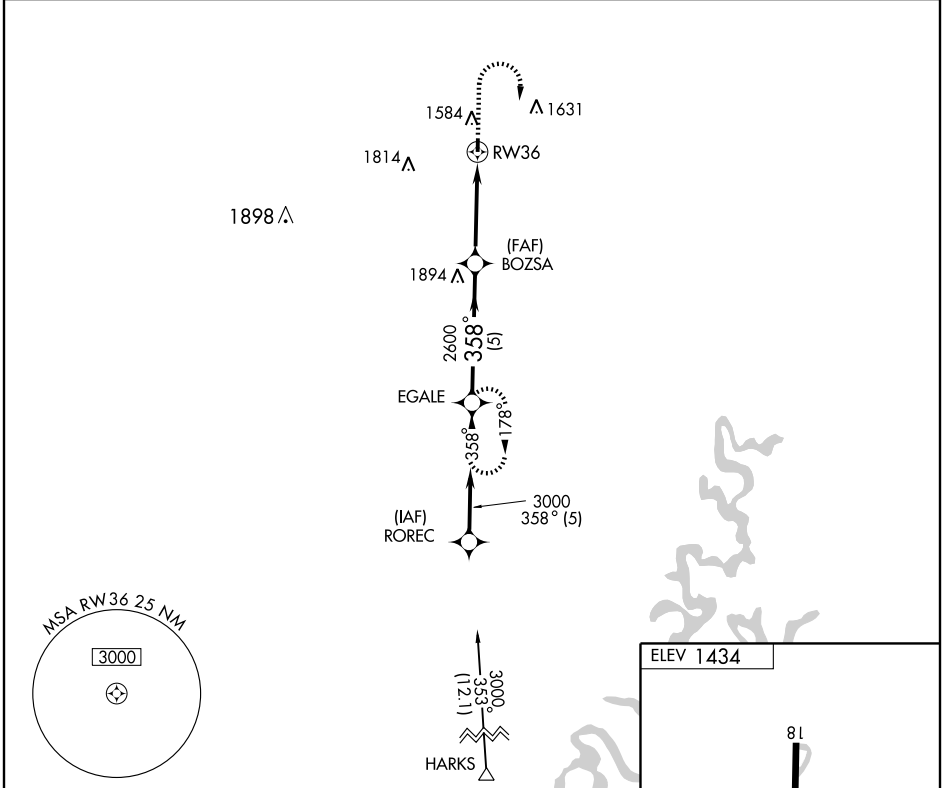
MISSED APPROACH: Climb to 2500 then climbing right turn to 3000 direct EGALE WP and hold.

SPRINGFIELD APP CON  
**124.95 318.2**

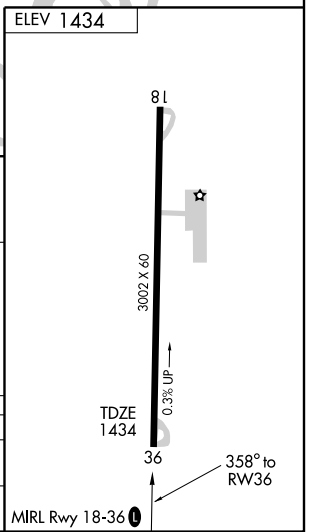
UNICOM  
**122.8 (CTAF) 0**

NC-3, 22 OCT 2009 to 19 NOV 2009

NC-3, 22 OCT 2009 to 19 NOV 2009



CATEGORY	A		B		C		D	
	1	2	1	2	1	2	1	2
S-36	2000-1	566 (600-1)			2000-1½	566 (600-1½)		NA
CIRCLING	2020-1	586 (600-1)			2020-1½	586 (600-1½)		NA



# GPS RWY 36