

RNAV (GPS) RWY 17

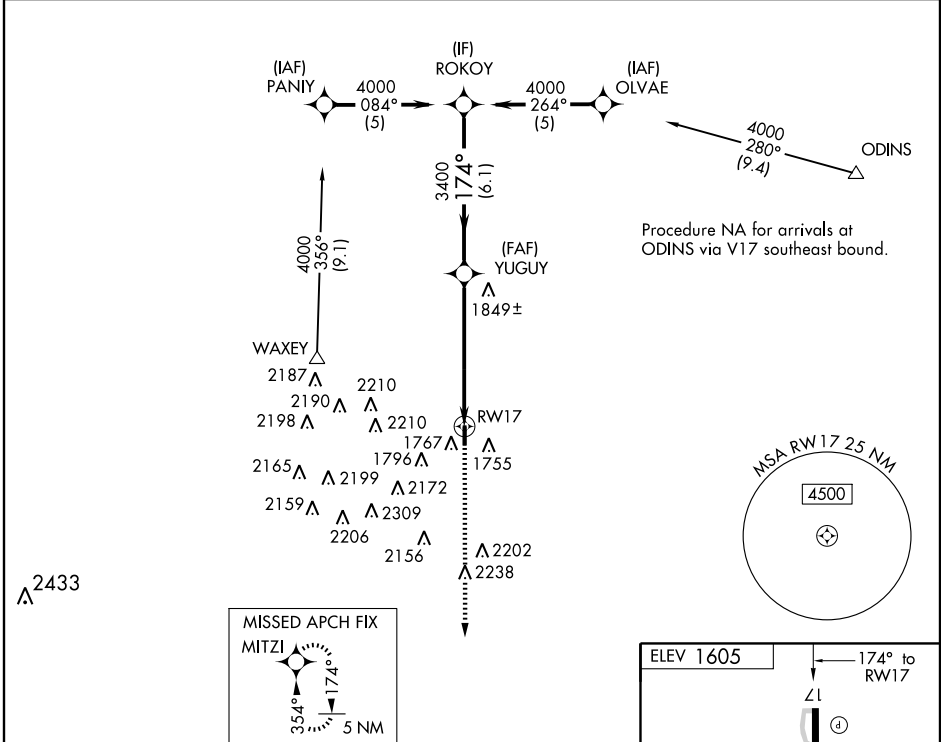
WEATHERFORD/THOMAS P. STAFFORD (OJA)

APP CRS 174°	Rwy Idg 4400 TDZE 1605 Apt Elev 1605
------------------------	---

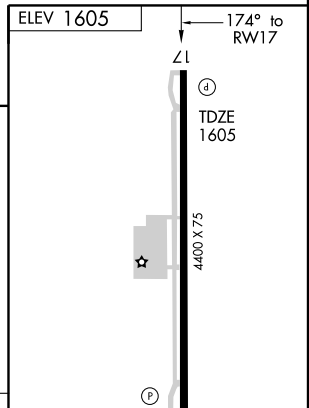
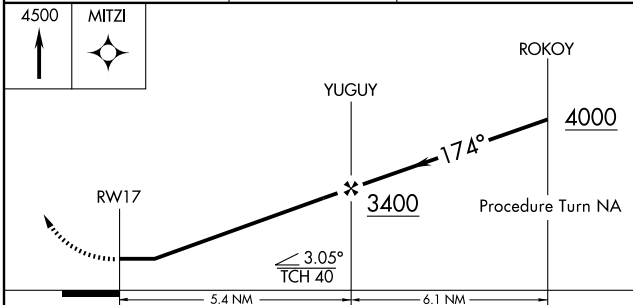
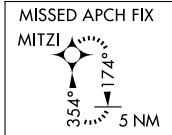
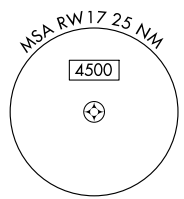
⚠ If local altimeter setting not received, use Clinton Rgnl altimeter setting and increase all MDAs 40 feet. DME/DME RNP-0.3 NA.
⚠ NA Visibility reduction by helicopters NA.

MISSED APPROACH: Climb to 4500 direct MITZI and hold.

AWOS-3 118.575	FORT WORTH CENTER 128.4 269.375	UNICOM 122.8 (CTAF)	GCO 135.075
--------------------------	---	-------------------------------	-----------------------



Procedure NA for arrivals at ODINS via V17 southeast bound.



CATEGORY	A	B	C	D
LNVA MDA	2100-1	495 (500-1)	2100-1½ 495 (500-1¼)	NA
CIRCLING	2100-1 495 (500-1)	2120-1 515 (600-1)	2140-1½ 535 (600-1½)	NA

MIRL Rwy 17-35

SC-1, 22 OCT 2009 to 19 NOV 2009

SC-1, 22 OCT 2009 to 19 NOV 2009