

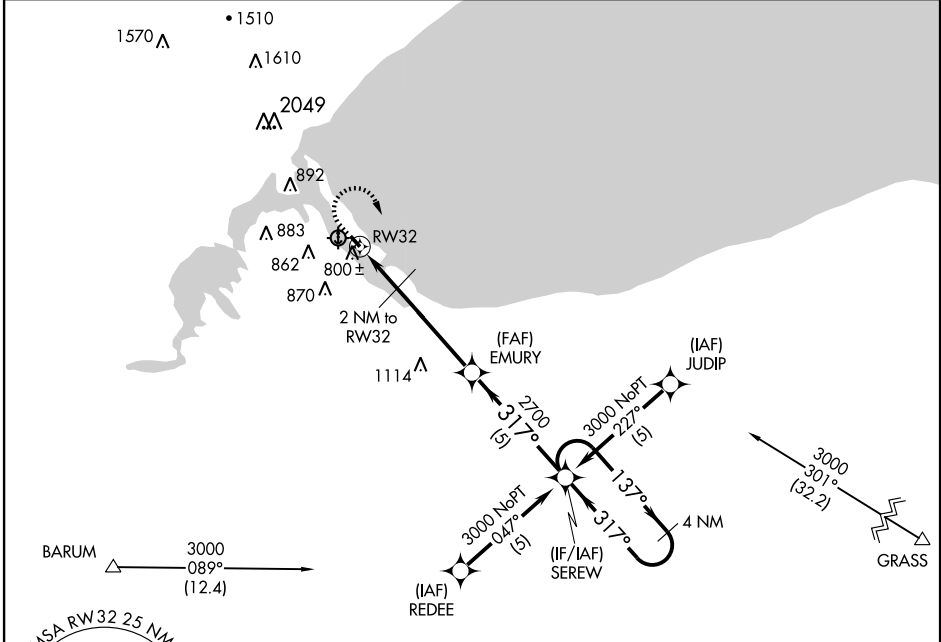
# RNAV (GPS) RWY 32

DULUTH/SKY HARBOR (D.Y.T)

APP CRS <b>317°</b>	Rwy Idg <b>2392</b>
	TDZE <b>610</b>
	Apt Elev <b>610</b>

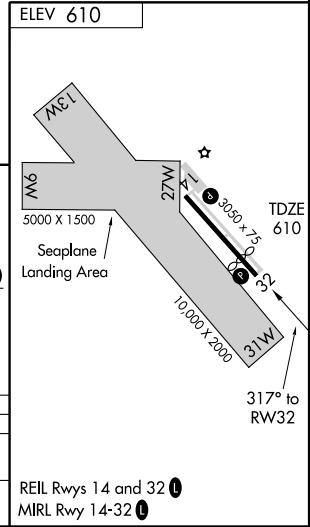
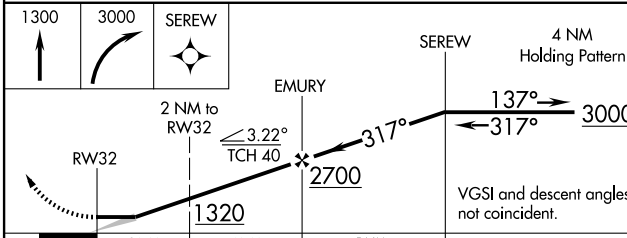
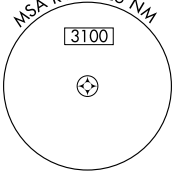
<b>▽</b> GPS or RNP-0.3 required.	MISSED APPROACH: Climb to 1300 then climbing right turn to 3000 direct SEREW WP and hold.
<b>△</b> NA	DME/DME RNP-0.3 NA.

AWOS-3 <b>119.275</b>	DULUTH APP CON * <b>125.45 255.9</b>	CLNC DEL <b>124.8</b>	UNICOM <b>122.7 (CTAF) ①</b>
--------------------------	---	--------------------------	---------------------------------



NC-1, 22 OCT 2009 to 19 NOV 2009

NC-1, 22 OCT 2009 to 19 NOV 2009



CATEGORY	A	B	C	D
LNAV	1060-1 450 (500-1)	1060-1¼ 450 (500-1¼)	NA	NA
CIRCLING	1100-1 490 (500-1)	1180-1½ 570 (600-1½)	NA	NA

REIL Rwy 14 and 32 ①  
MIRL Rwy 14-32 ①

# RNAV (GPS) RWY 32