

FORT MYERS, FLORIDA

AL-6757 (FAA)

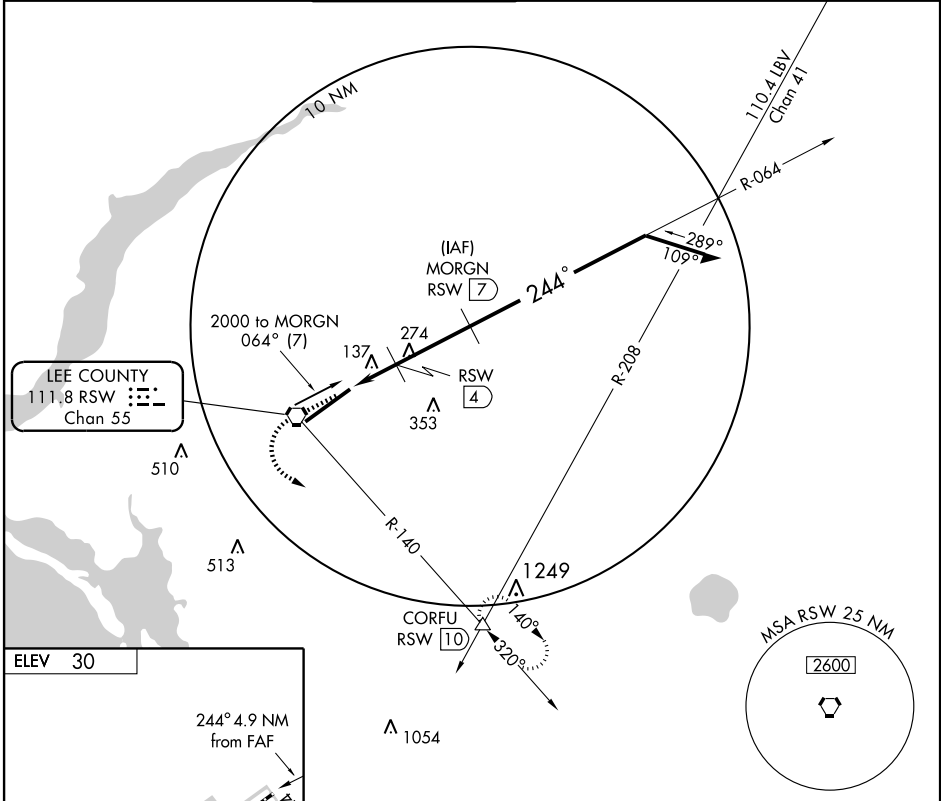
VOR/DME or TACAN RWY 24

FORT MYERS/ SOUTHWEST FLORIDA INTL (RSW)

VORTAC RSW 111.8 Chan 55	APP CRS 244°	Rwy Idg 12000 TDZE 30 Apt Elev 30
--	------------------------	--

MISSED APPROACH: Climb to 1000 then climbing left turn to 2200 via RSW R-140 to CORFU/RSW 10 DME and hold.

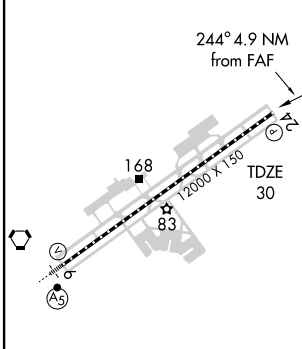
ATIS 124.65	FORT MYERS APP CON * 126.8 385.45	FORT MYERS TOWER * 128.75 257.8	GND CON 121.9 348.6	CLNC DEL 132.075	UNICOM 122.95 (CTAF)
-----------------------	---	---	-------------------------------	----------------------------	--------------------------------



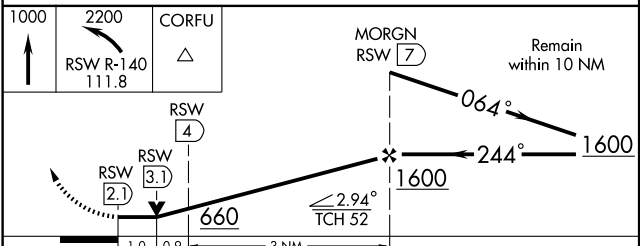
SE-3, 22 OCT 2009 to 19 NOV 2009

SE-3, 22 OCT 2009 to 19 NOV 2009

ELEV	30
------	----



REIL Rwy 24
TDZ/CL Rwy 6
HIRL Rwy 6-24



CATEGORY	A	B	C	D
S-24	400-1 370 (400-1)			400-1¼ 370 (400-1¼)
CIRCLING	500-1	470 (500-1)	500-1½ 470 (500-1½)	580-2 550 (600-2)

FORT MYERS, FLORIDA
Amdt 2 08269

FORT MYERS/ SOUTHWEST FLORIDA INTL (RSW)
26°32'N-81°45'W
VOR/DME or TACAN RWY 24