

FORT MYERS, FLORIDA

AL-6757 (FAA)

RNAV (GPS) RWY 6

WAAS CH 65619 W06A	APP CRS 058°	Rwy Idg 12000 TDZE 27 Apt Elev 30
--	------------------------	--

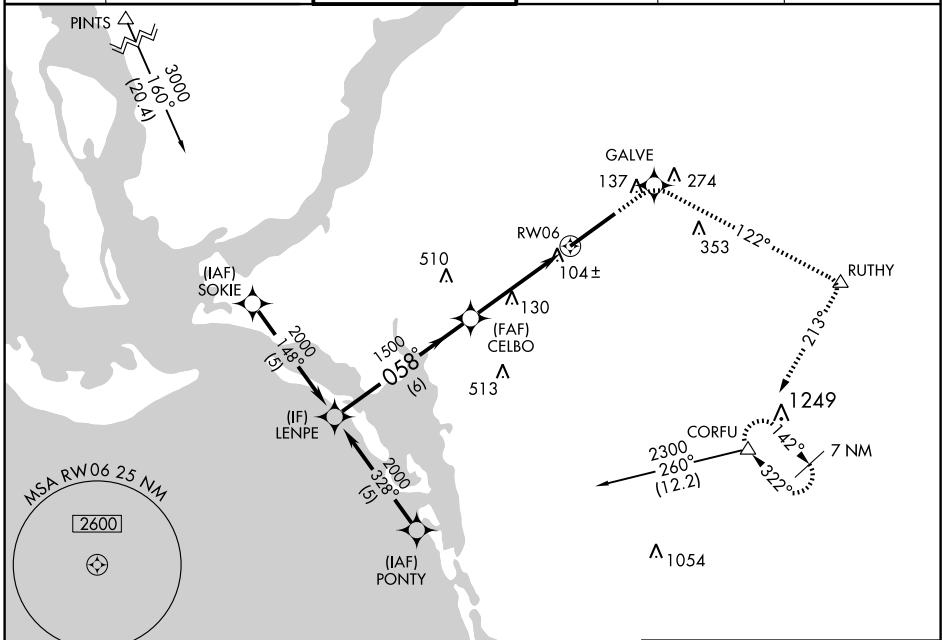
FORT MYERS/SOUTHWEST FLORIDA INTL (RSW)

▼ For uncompensated Baro-VNAV systems, LNAV/VNAV NA below -15°C (5°F) or above 48°C (118°F). DME/DME RNP-0.3 NA.
For inoperative MALSR increase LPV all Cats visibility to RVR 5000, and LNAV Cat. D visibility to RVR 6000.



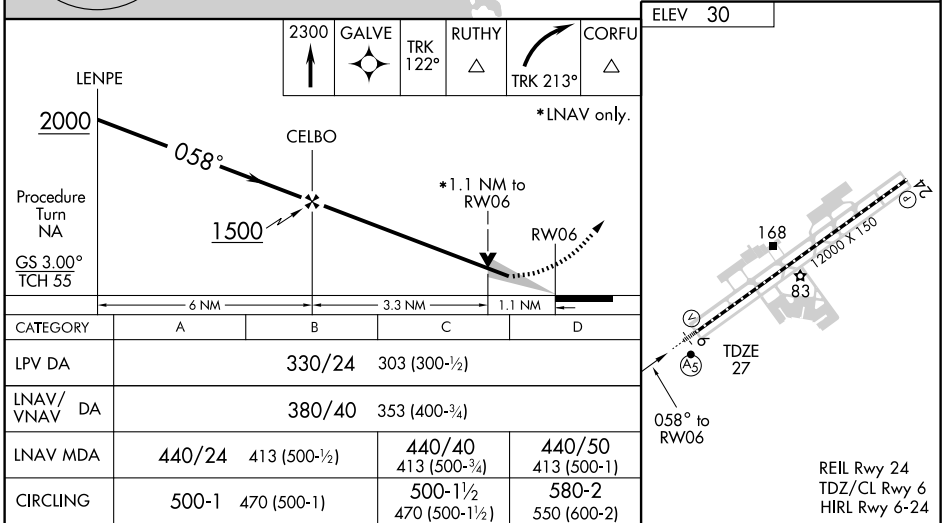
MISSED APPROACH: Climb to 2300 direct GALVE and via 122° track to RUTHY and right turn via 213° track to CORFU and hold.

ATIS 124.65	FORT MYERS APP CON * 126.8 385.45	FORT MYERS TOWER * 128.75 257.8	GND CON 121.9 348.6	CLNC DEL 132.075	UNICOM 122.95 (CTAF)
-----------------------	---	---	-------------------------------	----------------------------	--------------------------------



SE-3, 22 OCT 2009 to 19 NOV 2009

SE-3, 22 OCT 2009 to 19 NOV 2009



FORT MYERS, FLORIDA
Amdt 1B 08269

FORT MYERS/SOUTHWEST FLORIDA INTL (RSW)
26° 32'N-81° 45'W

RNAV (GPS) RWY 6