

WAAS CH 70319 W24A	APP CRS 238°	Rwy Idg 12000 TDZE 30 Apt Elev 30
--	------------------------	--

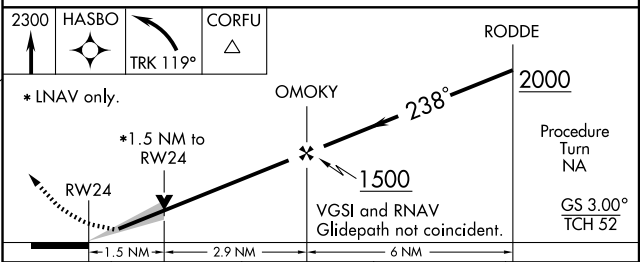
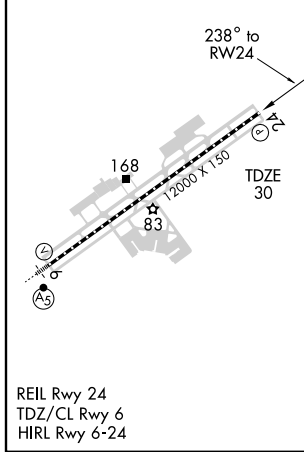
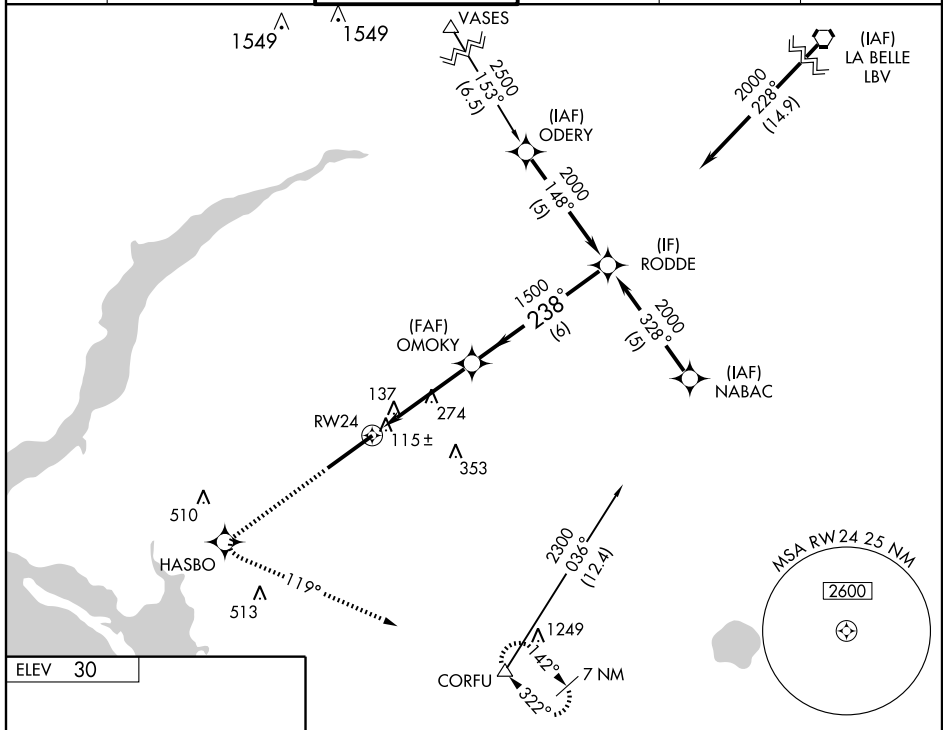
RNAV (GPS) RWY 24

FORT MYERS/SOUTHWEST FLORIDA INTL (RSW)

For uncompensated Baro-VNAV systems, LNAV/VNAV NA below -15°C (5°F) or above 48°C (118°F).
DME/DME RNP-0.3 NA.

MISSED APPROACH: Climb to 2300 direct HASBO and left turn via 119° track to CORFU and hold.

ATIS 124.65	FORT MYERS APP CON * 126.8 385.45	FORT MYERS TOWER * 128.75 257.8	GND CON 121.9 348.6	CLNC DEL 132.075	UNICOM 122.95 (CTAF)
-----------------------	---	---	-------------------------------	----------------------------	--------------------------------



CATEGORY	A	B	C	D
LPV DA		280-3/4	250 (300-3/4)	
LNAV/VNAV DA		420-1 1/4	390 (400-1 1/4)	
LNAV MDA	580-1	550 (600-1)	580-1 1/2 550 (600-1 1/2)	580-1 3/4 550 (600-1 3/4)
CIRCLING	580-1	550 (600-1)	580-1 1/2 550 (600-1 1/2)	580-2 550 (600-2)

SE-3, 22 OCT 2009 to 19 NOV 2009

SE-3, 22 OCT 2009 to 19 NOV 2009