

ILS or LOC RWY 6

FORT MYERS/ SOUTHWEST FLORIDA INTL (RSW)

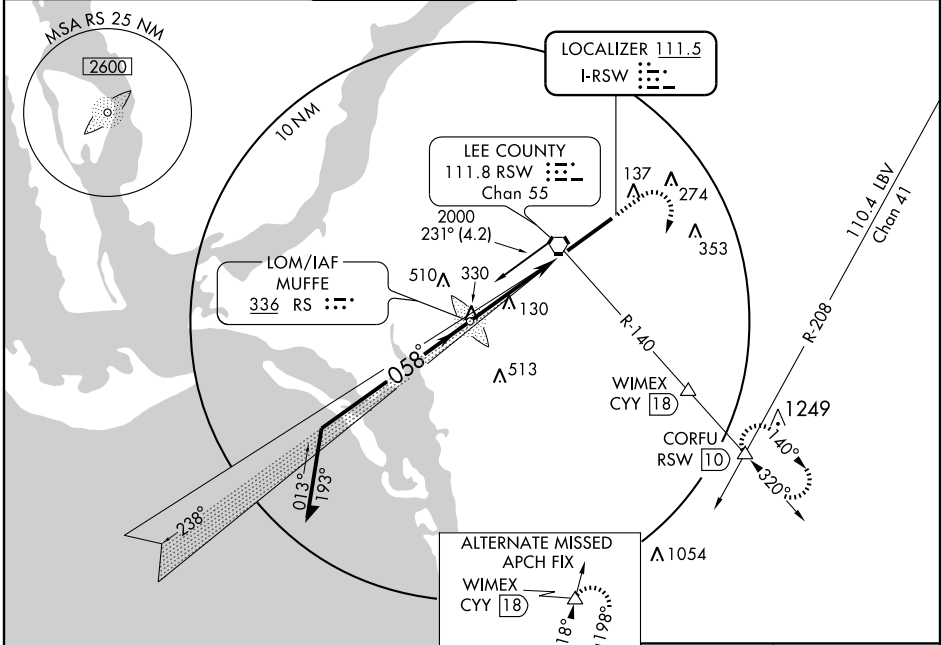
LOC I-RSW 111.5	APP CRS 058°	Rwy Idg 12000 TDZE 27 Apt Elev 30
---------------------------	------------------------	--

▼ Cat. E procedure turn NA-RADAR Required.
 ▲ For inoperative MALSR, increase S-ILS-6 Cat. E visibility to RVR 4000 and S-LOC-6 Cat. E visibility to RVR 6000.



MISSED APPROACH: Climb to 1000 then climbing right turn to 2300 via RSW VORTAC R-140 to CORFU Int/ RSW 10 DME and hold.

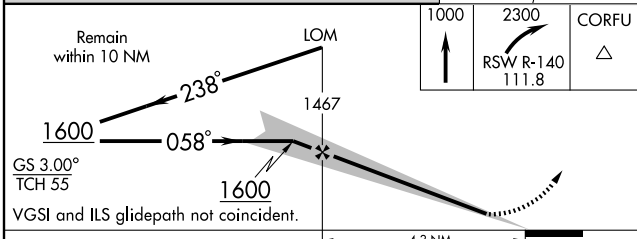
ATIS 124.65	FORT MYERS APP CON ★ 126.8 385.45	FORT MYERS TOWER ★ 128.75 257.8	GND CON 121.9 348.6	CLNC DEL 132.075	UNICOM 122.95 (CTAF)
-----------------------	---	---	-------------------------------	----------------------------	--------------------------------



SE-3, 22 OCT 2009 to 19 NOV 2009

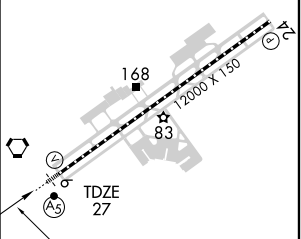
SE-3, 22 OCT 2009 to 19 NOV 2009

ADF OR RADAR REQUIRED.



ELEV 30

CATEGORY	A	B	C	D	E
S-ILS-6	227/18 200 (200-½)			227/24 200 (200-½)	
S-LOC-6	380/24 353 (400-½)		380/40 353 (400-¾)		
CIRCLING	500-1 470 (500-1)	500-1½ 470 (500-1½)	580-2 550 (600-2)	720-2½ 690 (700-2½)	



FAF to MAP 4.3 NM					
Knots	60	90	120	150	180
Min:Sec	4:18	2:52	2:09	1:43	1:26