

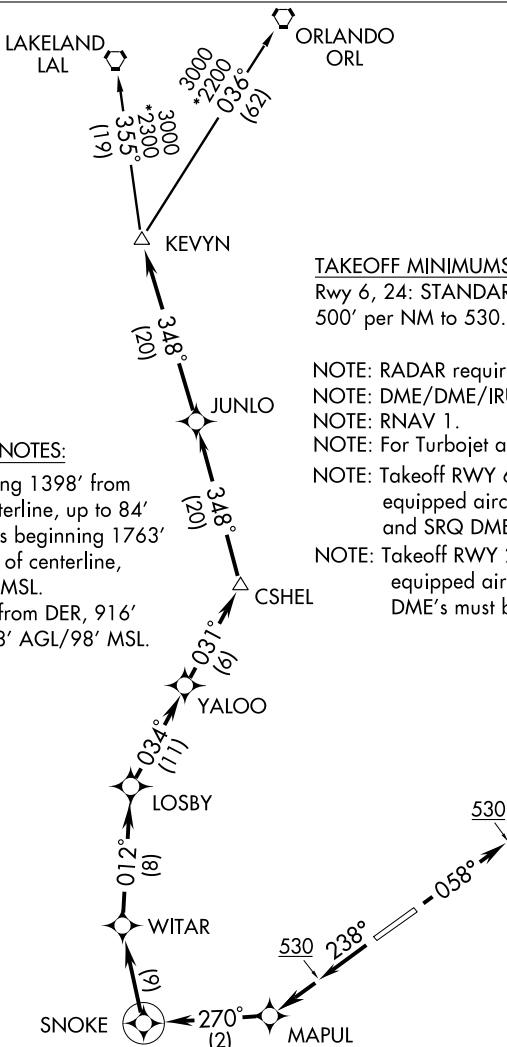
(CSHEL2.CSHEL) 09239

SL-6757 (FAA)

FORT MYERS/ SOUTHWEST FLORIDA INTL (RSW)
FORT MYERS, FLORIDA

CSHEL TWO DEPARTURE (RNAV)

ATIS
124.65
CLNC DEL
132.075
GND CON
121.9 348.6
FORT MYERS TOWER*
128.75 257.8
FORT MYERS DEP CON*
126.8 385.45
UNICOM
122.95 (CTAF)



TAKEOFF MINIMUMS:

Rwy 6, 24: STANDARD with ATC climb of 500' per NM to 530.

NOTE: RADAR required.

NOTE: DME/DME/IRU or GPS Required.

NOTE: RNAV 1.

NOTE: For Turbojet aircraft only.

NOTE: Takeoff RWY 6 - For non-GPS equipped aircraft, LAL, LBV, RSW and SRQ DME's must be operational.

NOTE: Takeoff RWY 24 - For non-GPS equipped aircraft LBV and RSW DME's must be operational.

TAKEOFF OBSTACLE NOTES:

Rwy 6: Trees beginning 1398' from DER, 582' left of centerline, up to 84' AGL/104' MSL. Trees beginning 1763' from DER, 860' right of centerline, up to 95' AGL/115' MSL.
Rwy 24: Tree 1692' from DER, 916' right of centerline, 78' AGL/98' MSL.

NOTE: Chart not to scale.

DEPARTURE ROUTE DESCRIPTION

TAKEOFF RUNWAY 6: Climb heading 058° or as assigned by ATC to 530. Expect vectors direct CSHEL, then via depicted route to KEVYN, thence...

TAKEOFF RUNWAY 24: Climb heading 238° to 530, then direct MAPUL, then climb via 270° track to SNOKE, then right turn direct WITAR, then via depicted route to KEVYN, thence

.... via (transition). Maintain 4000 or as assigned by ATC, expect filed altitude/flight level 10 minutes after departure.

LAKELAND TRANSITION (CSHEL2.LAL):

ORLANDO TRANSITION (CSHEL2.ORL):

CSHEL TWO DEPARTURE (RNAV)

(CSHEL2.CSHEL) 09239

FORT MYERS, FLORIDA
FORT MYERS/ SOUTHWEST FLORIDA INTL (RSW)

SE-3, 22 OCT 2009 to 19 NOV 2009

SE-3, 22 OCT 2009 to 19 NOV 2009