

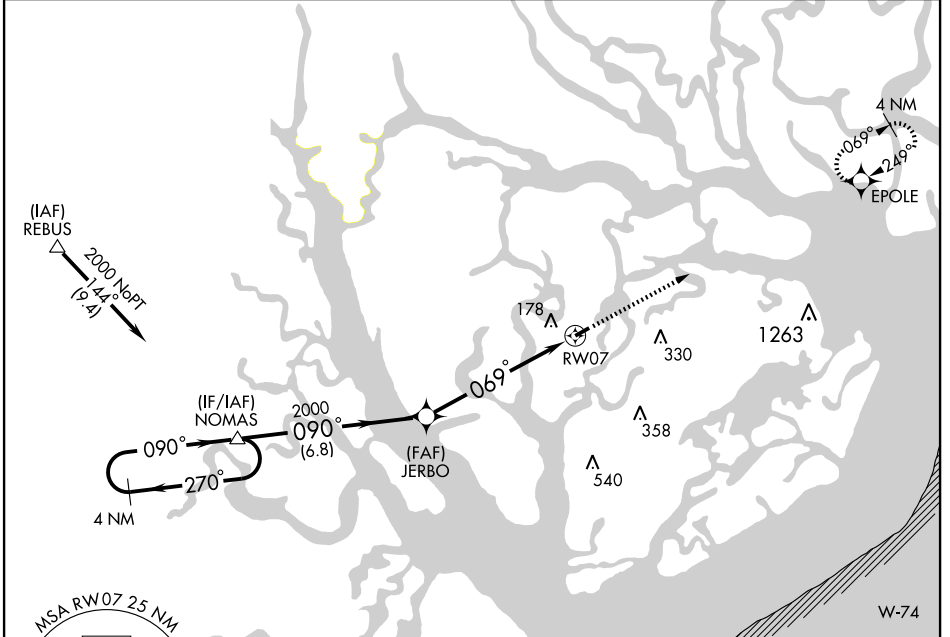
# RNAV (GPS) RWY 7

BEAUFORT COUNTY (A.R.W)

APP CRS	Rwy Idg	<b>3434</b>
<b>069°</b>	TDZE	<b>10</b>
	Apt Elev	<b>10</b>

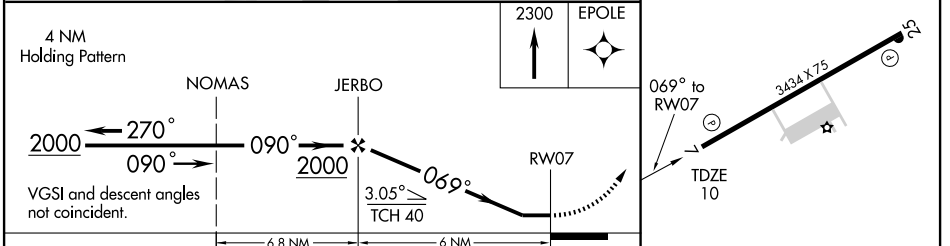
Use Beaufort MCAS/Merritt Field altimeter setting. NA GPS or RNP-0.3 Required. ASR DME/DME RNP-0.3 NA.	MISSED APPROACH: Climb to 2300 direct EPOLE WP and hold.
--	---

AWOS-3 <b>119.675</b>	BEAUFORT APP CON ★ <b>118.45 292.125</b>	UNICOM <b>122.7 (CTAF)</b>
--------------------------	---	-------------------------------

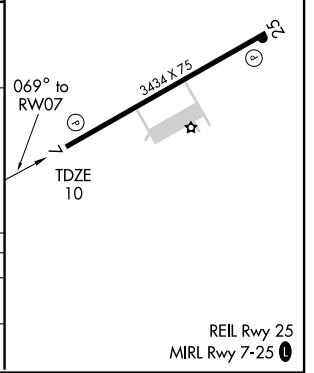


SE-2, 22 OCT 2009 to 19 NOV 2009

SE-2, 22 OCT 2009 to 19 NOV 2009



CATEGORY	A	B	C	D
LNAV MDA	520-1	510 (600-1)	520-1½ 510 (600-1½)	NA
CIRCLING	520-1	510 (600-1)	520-1½ 510 (600-1½)	NA



REIL Rwy 25  
MIRL Rwy 7-25