

PERKASIE, PENNSYLVANIA

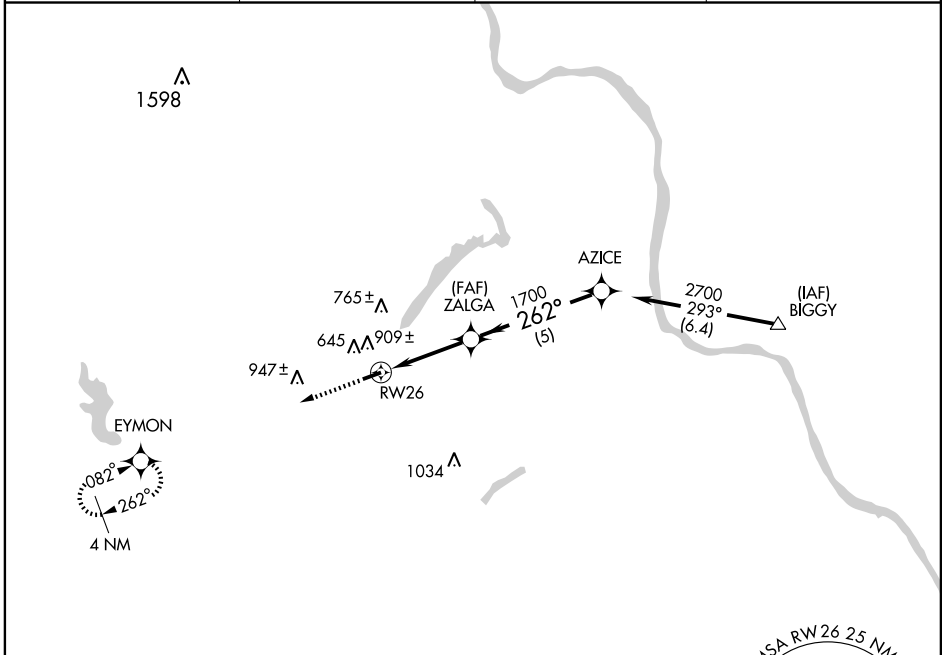
AL-6753 (FAA)

# RNAV (GPS) RWY 26

PERKASIE/PENNRIDGE (CKZ)

APP CRS <b>262°</b>	Rwy Idg TDZE Apt Elev	<b>3855</b> <b>564</b> <b>568</b>
------------------------	-----------------------------	---

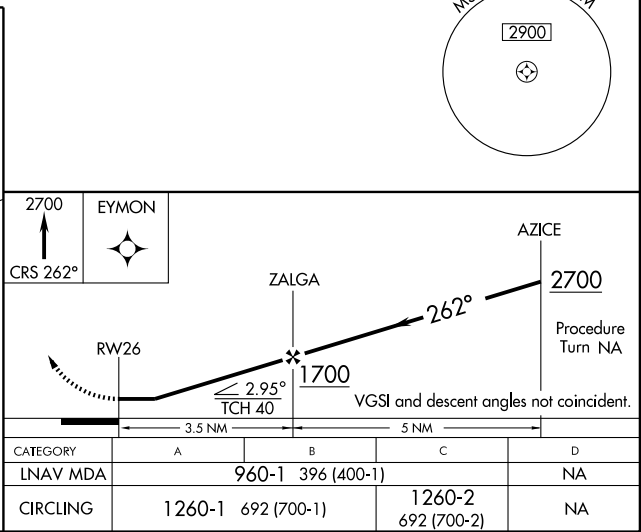
GPS or RNP-0.3 required. DME/DME RNP-0.3 NA.		MISSED APPROACH: Climb to 2700 via 262° course to EYMON WP and hold.	
AWOS-3 <b>126.325</b>	PHILADELPHIA APP CON <b>123.8 291.7</b>	CLNC DEL <b>118.55</b>	UNICOM <b>123.0 (CTAF)</b>



NE-4, 22 OCT 2009 to 19 NOV 2009

NE-4, 22 OCT 2009 to 19 NOV 2009

ELEV 568	Rwy 26 Idg 3855'
----------	------------------



PERKASIE, PENNSYLVANIA  
Orig 08325

40°23'N - 75°17'W

# RNAV (GPS) RWY 26