

LEXINGTON, MISSISSIPPI

AL-6752 (FAA)

VORTAC SQS 114.7 Chan 94	APP CRS 145°	Rwy Idg TDZE Apt Elev	N/A N/A 340
--	------------------------	-----------------------------	--

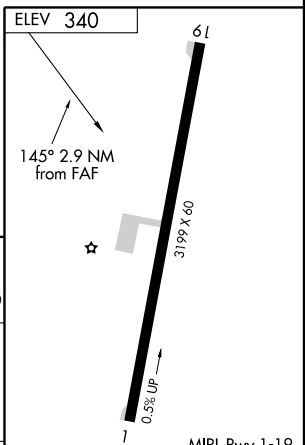
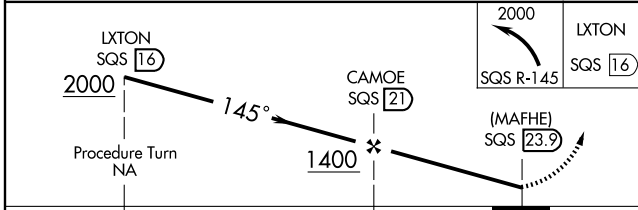
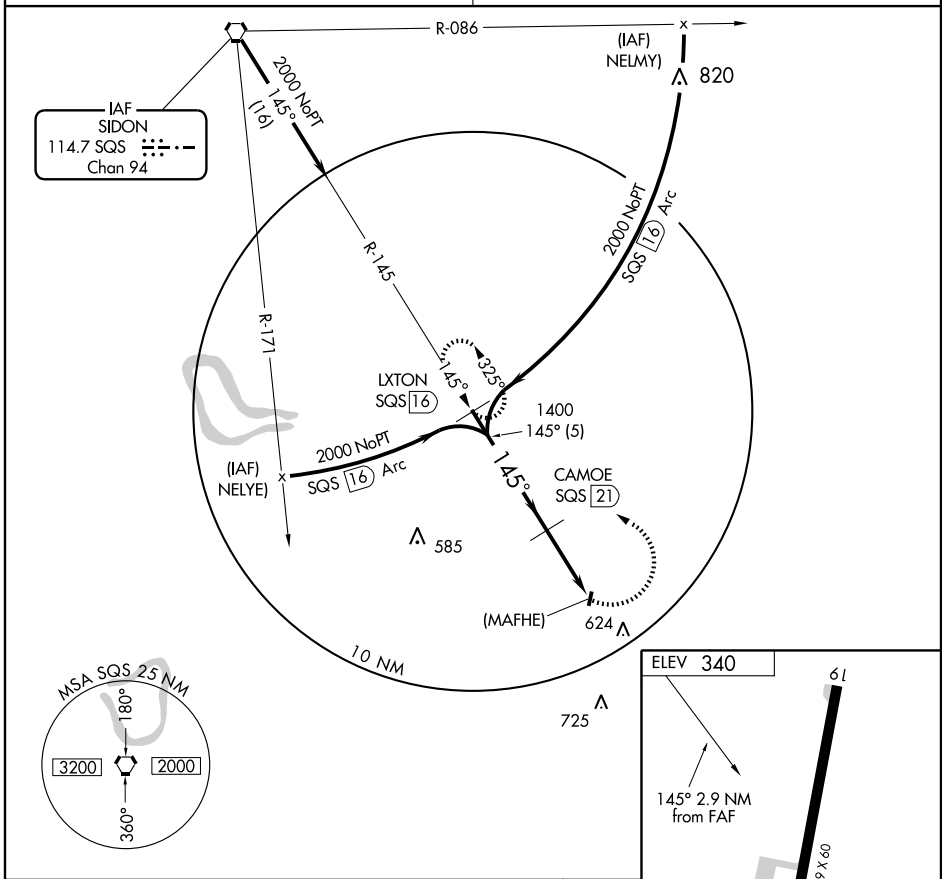
VOR/DME or GPS-A

LEXINGTON/ C.A. MOORE (19)M

▼ Use Greenwood FSS altimeter setting.
 ▲ NA
 MISSED APPROACH: Climbing left turn to 2000 via SQS R-145 to LXTON 16 DME and hold.

MEMPHIS CENTER
132.5 259.1

CTAF
122.9



CATEGORY	A	B	C	D	Knots	60	90	120	150	180
CIRCLING	880-1 540 (600-1)	880-1¼ 540 (600-1¼)	1020-2 680 (700-2)	NA	Min:Sec					

LEXINGTON, MISSISSIPPI
Orig 08157

33°08'N - 90°02'W

VOR/DME or GPS-A

SC-4, 22 OCT 2009 to 19 NOV 2009

SC-4, 22 OCT 2009 to 19 NOV 2009