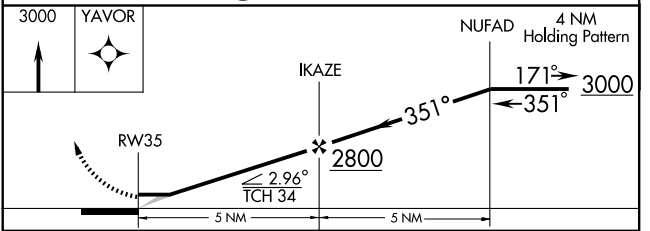
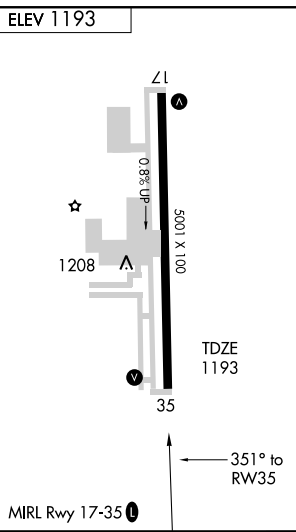
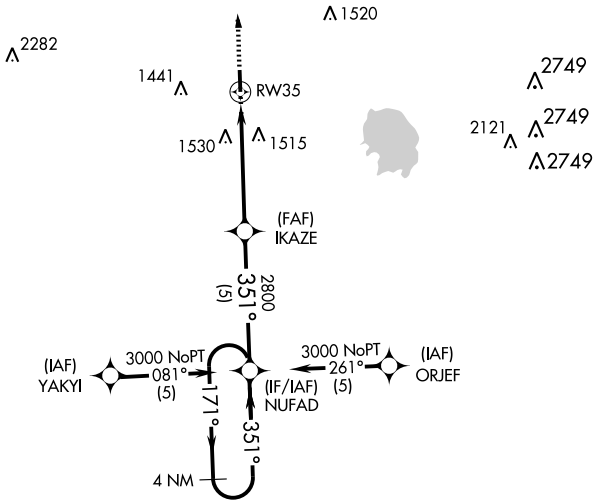
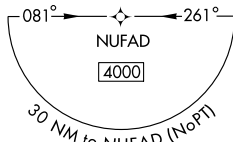
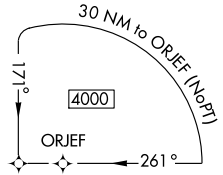
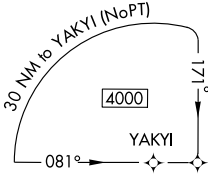


APP CRS <b>351°</b>	Rwy Idg <b>5001</b>
	TDZE <b>1193</b>
	Apt Elev <b>1193</b>

# RNAV (GPS) RWY 35

OKLAHOMA CITY/SUNDANCE AIRPARK (HSD)

<p><b>NA</b> Use Wiley Post altimeter setting. GPS or RNP-0.3 REQUIRED. DME/DME RNP-0.3 NA.</p>	<p>MISSED APPROACH: Climb to 3600 direct YAVOR WP and hold.</p>	
<p>OKE CITY APP CON <b>124.6 266.8</b></p>	<p>CLNC DEL <b>123.7</b></p>	<p>UNICOM <b>122.7 (CTAF)</b></p>



CATEGORY	A	B	C	D
GLS DA			NA	
LNAV/VNAV DA			NA	
LNAV MDA	1780-1 587 (600-1)	1780-1½ 587 (600-1½)		NA
CIRCLING	1780-1 587 (600-1)	1780-1½ 587 (600-1½)		NA

SC-1, 22 OCT 2009 to 19 NOV 2009

SC-1, 22 OCT 2009 to 19 NOV 2009