

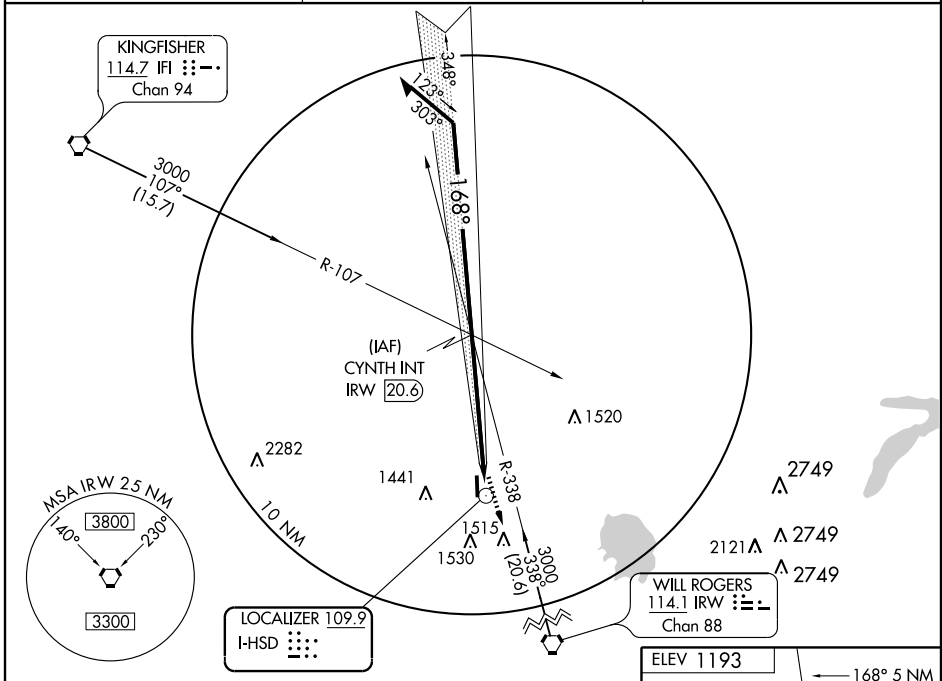
# LOC RWY 17

OKLAHOMA CITY/SUNDANCE AIRPARK (HSD)

LOC I-HSD <b>109.9</b>	APP CRS <b>168°</b>	Rwy Idg TDZE Apt Elev	<b>5001</b> <b>1178</b> <b>1193</b>
---------------------------	------------------------	-----------------------------	-------------------------------------------

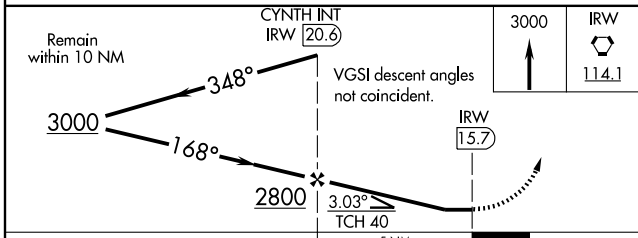
▼ Use Wiley Post altimeter setting.  
 ▲ NA  
 MISSED APPROACH: Climb to 3000 direct IRW VORTAC.

OKE CITY APP CON <b>124.6 266.8</b>	CLNC DEL <b>123.7</b>	UNICOM <b>122.7 (CTAF)</b>
----------------------------------------	--------------------------	-------------------------------

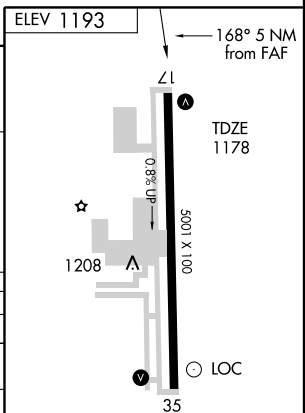


SC-1, 22 OCT 2009 to 19 NOV 2009

SC-1, 22 OCT 2009 to 19 NOV 2009



CATEGORY	A	B	C	D
S-17	1500-1	322 (400-1)		NA
CIRCLING	1740-1 547 (600-1)	1780-1 587 (600-1)	1780-1½ 587 (600-1½)	NA



MIRL Rwy 17-35

FAF to MAP 5 NM					
Knots	60	90	120	150	180
Min:Sec	5:00	3:20	2:30	2:00	1:40