

NDB or GPS RWY 16

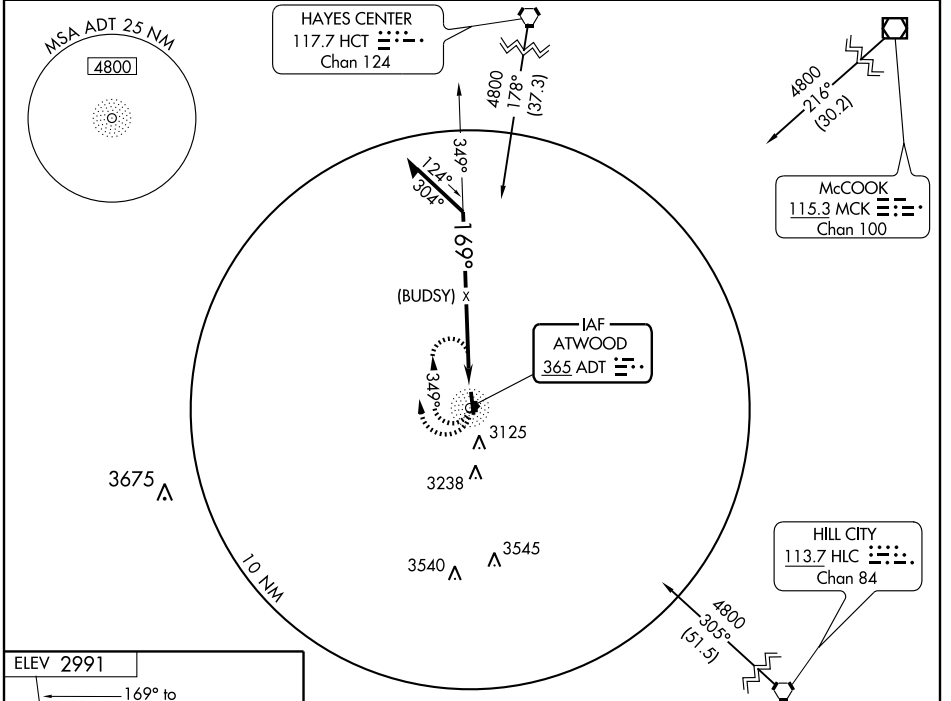
ATWOOD-RAWLINS COUNTY CITY-COUNTY (ADT)

NDB ADT 365	APP CRS 169°	Rwy Idg 4999
		TDZE 2988
		Apt Elev 2991

▲ NA Use McCook altimeter setting; if not received use Goodland altimeter setting.

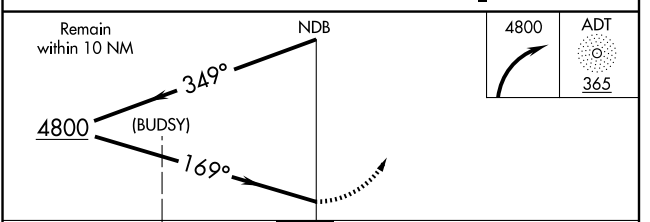
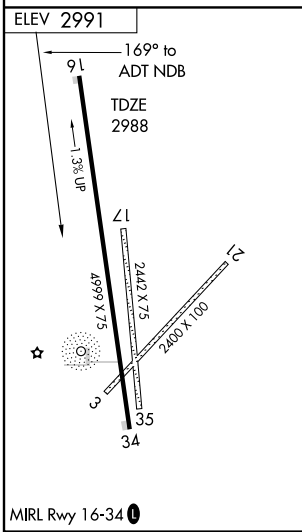
MISSED APPROACH: Climbing right turn to 4800 in ADT NDB holding pattern.

AWOS-3 118.675	DENVER CENTER 132.5 379.15	UNICOM 122.7 (CTAF) 0
--------------------------	--------------------------------------	---------------------------------



NC-2, 22 OCT 2009 to 19 NOV 2009

NC-2, 22 OCT 2009 to 19 NOV 2009



CATEGORY	A		B		C		D	
	4800	ADT 365	4800	ADT 365	4800	ADT 365	4800	ADT 365
S-16	3680-1	692 (700-1)	3680-2	692 (700-2)	3680-2 1/4	692 (700-2 1/4)	3680-2 1/4	692 (700-2 1/4)
CIRCLING	3680-1	692 (700-1)	3680-2	692 (700-2)	3680-2 1/4	692 (700-2 1/4)	3680-2 1/4	692 (700-2 1/4)
GOODLAND ALTIMETER SETTING MINIMUMS								
S-16	3740-1	752 (800-1)	3740-1 1/4	752 (800-1 1/4)	3740-2 1/4	752 (800-2 1/4)	3740-2 1/2	752 (800-2 1/2)
CIRCLING	3740-1	752 (800-1)	3740-1 1/4	752 (800-1 1/4)	3740-2 1/4	752 (800-2 1/4)	3740-2 1/2	752 (800-2 1/2)